



**Suvīdacare**<sup>®</sup>  
CHANGING LIVES NATURALLY



*YOU DESERVE  
BEST QUALITY  
HEALTH & SKINCARE*

[www.suvidacare.com](http://www.suvidacare.com)



**Maheshrajka Pharmaceuticals**  
Pvt. Ltd.



**ORACION SOLUTIONS**  
LLP

HEALTHCARE | BIOTECH | HERBAL | SOLUTION | FMCG | MANUFACTURING  
AYURVEDIC | COSMETICS | SKINCARE | VETERINARY



# MAHESHRAJKA GROUP OF COMPANIES.

## A WALK THROUGH THE MILESTONES:

The journey of Suvidacare is a testament to perseverance and innovation in the medical & healthcare industry. It all began in 1967 with a humble medical retail store owned by Mr. Sushil Agarwal. Over the years, the company embarked on a remarkable journey of growth and expansion, establishing several milestone companies along the way.

In 1977, ESKAG Pharma Pvt Ltd was founded, marking the first step towards creating a significant presence in the pharmaceutical sector, introducing groundbreaking products such as Suvida Contraceptive Pill. This was followed by Mittal Marketing and Sales Corporation in 1987 and BHP Private Limited in 1989, further solidifying the company's foothold in the market.

Finally, in 2023, on April 15th, Suvidacare embarked on its remarkable journey into the direct selling division. With a focus on success and innovation, Suvidacare aims to revolutionize the direct selling industry with its quality products and customer-centric approach.

The success of Suvidacare is a result of years of dedication, vision, and commitment to excellence in the healthcare sector. By constantly adapting to market trends and consumer needs, Suvidacare continues to pave the way for a healthier and brighter future.

## OUR GROUP OF COMPANIES



**MAHESHRAJKA PHARMACEUTICALS PVT. LTD.** is marketing wing of our group



**ORACION SOLUTIONS LLP** - A one stop solution for all.



**LA CHEMICO PVT LTD** modern medicine manufacturing.

### Corp. Address

66/1A, Baithakkhana Road, 1st Floor, Kolkata-700 009, WB.,  
TEL:033-4065 1002; Ph.No:9062444333;  
E-mail:suvidacareindia@gmail.com;  
Website:www.suvidacare.com



**Mr. Sushil Kr Agarwal**  
Group Chairman



**Mr. Suyash Agarwal**  
Group CEO

# Company Vision & Mission

Suvidacare stands as a testament to our collective vision and mission. We are not just a company; we are a community driven by a shared purpose – to transform lives through health, wellness, and financial empowerment. Our vision is ambitious yet achievable: to lead the direct selling industry with integrity, innovation, and inclusivity. We aspire to create a world where everyone has access to superior wellness solutions and the opportunity to achieve their dreams. Our mission serves as our roadmap, guiding us every step of the way. We are committed to delivering exceptional products, fostering a supportive environment for our distributors, and making a positive impact on society.

In the dynamic landscape of direct selling, Mr. Suyash Agarwal stands as a visionary leader, driving innovation and transformation through SUVIDACARE, a company redefining the industry norms. As the CEO of SUVIDACARE, Suyash Agarwal's journey epitomizes resilience, creativity, and an unwavering commitment to customer-centric values.

SUVIDACARE, under Mr. Agarwal's guidance, has embarked on a mission to empower individuals through a unique business model that combines direct selling with cutting-edge technology. At the heart of this model lies a dedication to providing high-quality products directly to consumers while offering unparalleled entrepreneurial opportunities.

Suyash Agarwal's leadership philosophy revolves around fostering a culture of transparency, integrity, and continuous improvement. He believes in empowering SUVIDACARE's independent distributors with the tools, training, and support they need to succeed in their entrepreneurial endeavors. By prioritizing distributor success, SUVIDACARE ensures a symbiotic relationship where both the company and its associates thrive together. Suyash Agarwal's forward-thinking approach has enabled SUVIDACARE to stay agile in an ever-evolving market landscape, driving sustainable growth and market expansion.

Moreover, Mr. Agarwal's commitment to social responsibility is ingrained in SUVIDACARE's DNA. The company actively engages in philanthropic initiatives, supporting causes ranging from environmental conservation to education and healthcare. Suyash Agarwal believes that businesses have a responsibility not only to generate profits but also to make a positive impact on society.

In the face of challenges, Suyash Agarwal's leadership shines through, inspiring resilience and adaptability within the SUVIDACARE community. Whether navigating regulatory changes or addressing market fluctuations, Mr. Agarwal's strategic vision and steadfast determination steer the company towards sustainable growth and long-term success.

In conclusion, Mr. Suyash Agarwal's tenure as CEO of SUVIDACARE exemplifies visionary leadership in the direct selling industry. His unwavering commitment to innovation, integrity, and social responsibility has not only propelled SUVIDACARE to new heights but has also set a benchmark for excellence in the realm of direct selling. As SUVIDACARE continues to redefine the landscape of direct selling, Mr. Agarwal's vision and leadership serve as guiding beacons, illuminating the path to a brighter future for the company and its stakeholders alike.

"Your work is going to fill a large part of your life, and the only way to be truly satisfied is to do what you believe is great work. And the only way to do great work is to love what you do." - Steve Jobs

\*Revolutionizing Direct Selling

"Working towards unemployment free, disease free, self reliant India."

# Haldi Chandan Face Wash

## Benefits

- Reduces the number of superficial wrinkles.
- Improves skin texture and tone.
- Unblocks and cleanses the pores.

## Method of use

Apply a small amount of Haldi Chandan face wash & rub in circular motion. Wash off & pat dry. For best result use twice daily.



**Presentation : 100ml**  
**M.R.P. : ₹ 175/-**  
**D.P. : ₹ 140/- ; P.V. : 40**

## Kiwi

### Face Wash

For Oily Skin

## Benefits

- Reduces the number of Superficial wrinkles.
- Improves skin texture and tone.
- Unblocks and cleanses the pores.

## Method of use

Apply a small amount of Suvīdacare Kiwi face wash & rub in circular motion. Wash off & pat dry. For best result use twice daily.



**Presentation : 100ml**  
**M.R.P. : ₹ 149/-**  
**D.P. : ₹ 126/- ; P.V. : 34**

## UBTAN Face Wash

## Benefits

- Removes tan.
- Brightens skin.
- Reduces the number of Superficial wrinkles.
- Improves skin texture and tone.
- Unblocks and cleanses the pores.

## Method of use

Apply a small amount of Suvīdacare Ubtan face wash & rub in circular motion. Wash off & pat dry. For best result use twice daily.



**Presentation : 100ml**  
**M.R.P. : ₹ 149/-**  
**D.P. : ₹ 126/- ; P.V. : 34**



## FACE WASH

For All Types  
of Skin

### Vitamin C

### Benefits

- It helps fade hyperpigmentation which leads to brightening of the skin.
- It boosts collagen production and prevents the skin from sagging.
- It Cleanses, Removes Dirt and Controls Oil.



- This antioxidant rich formula washes away dirt, grime and impurities, reduces dark spots and protects skin from sun damage and reduces redness of the skin.
- Hyaluronic Acid hydrates and conditions skin.
- Vitamin E acts as a natural antioxidant, absorbing the energy from UV rays and becoming a shield for your Skin.

### Method of use

Apply a small amount of Nova glow Vitamin C face wash & rub in circular motion. Wash off & pat dry. For best result use twice daily.

**Presentation : 100ml**

**M.R.P. : ₹ 249/-**

**D.P. : ₹ 199/- ; P.V. : 80**

## SuvidaBeauty™ Papaya

With Pineapple  
& Honey

Face Wash

For All Skin Types

### Benefits

- Papaya is best for skin care as it works to provide you with health and glowing skin.
- Papaya is a good source of vitamin A and Papain which helps removing dead skin cells and with breaking down inactive proteins.



- It helps keep skin hydrated, removes discoloration and reduces the signs of aging.
- It naturally exfoliate your skin so your complexion and tone will improve.
- Honey used as a cleanser to help prevent certain types of breakouts because of its anti-fungal properties.

### Method of use

Apply a small amount of Suvida Beauty Papaya face wash & rub in circular motion. Wash off & pat dry. For best result use twice daily.

**Presentation : 100ml**

**M.R.P. : ₹ 199/-**

**D.P. : ₹ 149/- ; P.V. : 44**

## SuvidaKlean™

### Neem Face wash

with Tea Tree  
All Skin Types



### Benefits

- This Neem face wash is rich in antibacterial properties which not only treats acne, but also protects the skin from external aggressors that can damage your skin.
- Its Tea Tree formula has a anti-inflammatory and antibacterial properties which helps to achieve healthy and clear skin with constant usage.



- It helps to control pimples and acne.
- Prevent blackheads.
- Soothes skin irritation.
- Tightens pores.

### Method of use

Apply a small amount of SuvidaKlean Neem with Tea Tree face wash & rub in circular motion. Wash off & pat dry. For best result use twice daily.

**Presentation : 100ml**

**M.R.P. : ₹ 199/-**

**D.P. : ₹ 149/- ; P.V. : 45**

## MAN KARE™ Blueberry

With Honey &

Vitamin-E

All Skin Types

### Benefits

- Helps for Skin Cleansing and brightening properties.
- Blueberry extracts, used in skincare essentials, benefit the skin by helping to reduce dark spots and treat hyperpigmentation and blemishes.



- Fight against acne to removes it.
- It Hydrates and moisturizes the skin.
- Honey is naturally antibacterial which helps to remove dirt and impurities.
- Vitamin E acts as a natural antioxidant, absorbing the energy from UV rays and becoming a shield for your Skin.

### Method of use

Apply a small amount of Man kare Blueberry face wash & rub in circular motion. Wash off & pat dry. For best result use twice daily.

**Presentation : 100ml**

**M.R.P. : ₹ 199/-**

**D.P. : ₹ 149/- ; P.V. : 48**

**Suvidacare**

# TOMATO Facewash

For All Types of Skin

**Benefits**

- Reduces excessive oil. An acneprone skin must have bothered you on several occasions.
- Removal of dead skin.
- Prevents Acne.
- Brightens the skin.
- Relieves Skin Irritation.
- Delays the signs of ageing.
- Tighten pores.

**Method of use**

Take out a small quantity of face wash from tube on wet palms. Rub palms against each other to work up the lather and gently massage on face for 2-3 minutes rinses with water & dry.



**Presentation : 100ml**  
**M.R.P. : ₹ 299/-**  
**D.P. : ₹ 239/- ; P.V. : 87**

# Honey Malai

## Facewash

Smooth & Nourish

For All Types of Skin



### Benefits

- The face wash revives your skin's natural glow while leaving it bright and radiant it.
- Infused with the goodness of honey.
- The BEBO EARTH Honey Malai face wash deeply nourishes your skin with its moisturizing properties .

### Method of use

Apply a small amount of BEBO EARTH Honey Malai face wash & rub in circular motion. Wash off & pat dry. For best result use twice daily.



**Presentation : 100ml**  
**M.R.P. : ₹ 249/-**  
**D.P. : ₹ 199/- ; P.V. : 66**

**Suvidacare**

# Aloe vera Facewash

With Ashwagandha, Turmeric, Cucumber

For All Types of Skin

- Removes acne, pimples & skin impurities.
- Aloe vera nourishes & makes skin soft.
- Cleanses the effect of pollution.
- Helps in regenerating young skin cells.
- Moisturises the skin.

### Method of use

Apply a small amount of SUVIDACARE Aloe vera face wash & rub in circular motion. Wash off & pat dry. For best result use twice daily.



**Presentation : 100ml**  
**M.R.P. : ₹ 199/-**  
**D.P. : ₹ 149/- ; P.V. : 45**



# RETINOL Facewash

With Bakuchiol

For All Types of Skin

### Benefits

- Anti ageing & blemishes.
- Youthful, soft & radiance skin.
- Boost collagen production.
- Tighten skin agents.

### Method of use

- Apply appropriate moisturizer in case of dry skin.
- Rinse off with clear water and pat your face dry.



**Presentation : 100ml**  
**M.R.P. : ₹ 299/-**  
**D.P. : ₹ 249/- ; P.V. : 87**

# Strawberry

## Face Wash

### Benefits

- Reduces the numbers of superficial wrinkles
- Improves skin texture and tone.
- Unblocks and cleanses the pores.

### Method of use

Apply a small amount of Suvīdacare Strawberry face wash & rub in circular motion. Wash off & pat dry. For best result use twice daily.



**Presentation : 100ml**  
**M.R.P. : ₹ 149/-**  
**D.P. : ₹ 126/- ; P.V. : 34**

# Sun Screen

## Aqua Gel

*Nova glow*

with  
**Hyaluronic Acid**

#### Ingredients :

Purified water, Titanium Dioxide, Sodium Polyacrylate, Ethylhexyl Methoxycinnamate, Zinc Oxide, Glycerin, Xylitol, Phospholipids, Butyl Methoxydibenzoylmethane, Caprylic Acid, Glyceryl Stearate, Dimethicone, Hyaluronic Acid, Helianthus Annuus (Sun flower) Seed Oil, 1,3-Butylene Glycol, D-Alpha Tocopheryl Acetate, Carbomer, Aloe Barbadensis, Sodium Benzoate, Benzophenone-3, E-Ascorbic acid, Sodium Levulinate, Allantoin, Phenoxyethanol, & Fragrance

#### FOR CLEAR & SMOOTH SKIN

- Hyaluronic Acid
- Vitamin E Day+Night
- Protects from harmful UV rays

#### Benefits :

- This rare formula diminishes sun spot and blemishes.
- Plumps the skin while minimizing wrinkles.
- One of the most powerful antioxidant that Reduces sunburn cells.
- Guaranteed to leave skin moisturized with a youthful glow.



**Presentation : 50ml**  
**M.R.P. : ₹ 499/-**  
**D.P. : ₹ 399/- ; P.V. : 150**

MAN KARE™

SPF 50<sup>+</sup>

PA+++UVA

Sun Screen gel

All Skin Types



### Ingredients:

Cyclopentasiloxane dimethiconecrosspolymer, Methicone PEG - 12 Dimethicone / PPG - 20 Crosspolymer, EthylhexylMethoxycinnamate, Cyclopentasiloxane PEG/PPG-18/18 Diemethicone, Methylene BIS-Benzotriazolyl, C12-C15 Alkyl Benzoate, dimethicone crosspolymer, Ethylhexyl Triazone, Silica, Lauryl Laurate, Diazolidinyl urea (and)Iodopropynyl Butyl Carbamate, Octyl Methoxy Cinnamate, Iso Propyl Myristate, Methelene Bis - Benzotriazolyl Tetramethylbutylphenol (and) Aqua (and) Decyl Glucoside (and) Xanthan Gum, BHT, Diethylamino HydroxybenzoylHexyl Benzoate, Caprylylglycol, Tetramethyl butyl Phenol, Bis - ethylhexyloxyphenol methoxyphenyltriazine Propylene Glycol, zinc and Vitamin C, Olivum 1000, Phenyl Trimethicone & Fragrance

### Benefits:

- High UVA & TUB Rays Protection.
- Ultra Protect non-comedogenic matte formula, non oily
- Water Resistant
- 6 hours long protection
- Ultra Light Matte Finish
- It helps fight free radicals formed by UV radiation. It also has brightening properties and can also protect you from sun. Studies have shown that Vitamin C protect the skin from damage caused by UV rays.
- Zinc may protect skin from UV damage because of the way it behaves relation to other metals in our body, like iron and copper. Zinc may help treat acne problem.

Presentation : 60gm

M.R.P. : ₹ 499/-

D.P. : ₹ 399/- ; P.V. : 175



# Suwida Fresh™

## BODY WASH

### Ingredients:

Purified water, Decyl Glucoside, Cocamidopropyl Betaine, Sodium Laureth Sulfate, Sodium Cocoyl Isethionate, Glycerine, Aloe Barbadensis (Aloevera Extract), Citric Acid, Phenoxyethanol, Soponaria Officinalis (Soapwort Extract), Oryza Sativa (Rice Extract), Coco Mycitera (Coconut Oil), & Fragrance.

### Benefits:

- It makes skin extra smooth and super soft.
- It gives natural glowing skin.
- It cleanses all the impurities and dead cells from your body.



Presentation : 200ml  
M.R.P. : ₹ 299/-  
D.P. : ₹ 225/- ; P.V. : 100



# Suvidaclean™ hair

**REMOVAL Cream**  
*All Types Skin*

## Benefits

- Quick Hair Removal Action
- New Formula, Long Lasting Effect
- Safe and Easy to Use
- Applicable For Men & Women
- A plastic spatula is absolutely free with each pack



**Presentation : 60gm**  
**M.R.P. : ₹ 349/-**  
**D.P. : ₹ 249/- ; P.V. : 115**



# Mamagic™

## Kesar & Sandalwood Face Gel



LACURE®  
SKIN CARE

### Ingredients:

Purified Water, Aloe Barbadensis(Aloevera Extract), Kesar, Carbomer, Glycerine, Phenoxyethanol, Triethanolamine, Vitamin E, Chandan Extract DL- Alpha, Tocopheryl Acetate and Fragrance.

### Benefits:

- Soothe sunburn with anti- inflammatory and cooling properties.
- Mamagic Kesar & Sandalwood Face Gel is the perfect remedy for sunburned skin.
- Has excellent moisturizing quality.
- Accelerate wound healing.
- Reduce acne and infection.
- Fight ageing.



Presentation : 50gm  
 M.R.P. : ₹ 199/-  
 D.P. : ₹ 149/- ; P.V. : 75

  
**Suvidacare**  
 CHANGING LIVES NATURALLY

# UBTAN MOISTURISING CREAM

### BENEFITS:

- Reduces the numbers of superficial wrinkles.
- Improves skin texture and tone.
- Unblocks and cleanses the pores.



Presentation : 200gm  
 M.R.P. : ₹ 349/-  
 D.P. : ₹ 279/- ; P.V. : 108



# Skin GlowFAST™

स्कीन ग्लो फास्ट Day Cream



- Pigmentation • Dark Spot • Melasma

**Composition :** Each gm contains :

Babuna (Matricaria chamomilla)	1.5 %	Manjistha (Rubia cordifolia)	1%
Kumari (Aloevera)	3%	Lodhra (Symplocos racemosa)	0.5%
Chandan (Santalum album)	1 %	Babchi oil Extract	2%
Khas khas (Andropogon muricatus)	1%	Indrayan Extract	2%
Walnut (Juglans regia)	1%	Bearberry Extract	1%
Cocoa butter (Theobroma cacao)	2 %	Cream base	q.s.
Wheat germ oil	1%		
Borax (Sodii biboras)	1%		
Narangi (Citrus aurantium)	1%		
Trapusha (Cucumis sativus)	2%		

Mfd. by : Indo Himaliyen Herbs Inc.  
Plot No. 158, Sector-29, Part-I,  
HUDA, Panipat-132 103

**Indication:-**

- Imparts glow and brightening.
- Reduces tan and pigmentation.
- Provides smooth and even-textured glow.
- Removes spot and acne.
- Hydrates skin all day.
- Provides SPF 20 protection against harmful UV rays.
- Repairs skin and fights signs of aging.
- Soothes and purifies skin.



**Presentation : 20gm**  
**M.R.P. : ₹ 149/-**  
**D.P. : ₹ 120/- ; P.V. : 60**



## LIP BALM

**Ingredients:**

Cocos nucifera Oil+Carrot sees oil +Wheatgerm oil+Strawberry+Vitamin E

**Benefits**

- It help to moisturizer your dry lips.
- Nourish & soften lips.
- It carring lip smoothes.
- Help to repair cracked lips.



**Presentation : 6gm.**  
**M.R.P. : 15/-**  
**D.P. : ₹ 10/- ; P.V. : 2**



## Moisturisign COLD CREAM

**Ingredients:**

Rose petals+Liquorice Extracts

**Benefits**

- Boost hydration.
- It make skin soft & supple.
- Help to increse moistursinglevel.
- Protect harmful effects of the sun.



**Presentation : 20ml.**  
**M.R.P. : 25/-**  
**D.P. : ₹ 20/- ; P.V. : 3**



# Retinol

Night Cream  
with Retinol & Bakuchi

## For Fine Lines & Wrinkles

### Ingredients :

Purified water, Light Liquid Paraffin, Cera Alba, Stearic Acid, Glycerine, Butyrospermum Parkii (shea) Butter, Curcumin, Retinol, Sodium Borate, Rapeseed Oil, Bakuchi Oil, Glyceryl Monostearate, Octyl Methoxycinnamate, Emulsifying Wax, Prunus Amygdalus Dulcis (almond) Oil, Isopropyl Myristate, Dimethicone, DL-alpha Tocopheryl Acetate, Phenoxyethanol, Cetyl Alcohol, Sodium, Allantoin & Ethylenediaminetetraacetic Acid, Fragrance.

Nova Glow Retinol Night Cream Comes In An Airless Bottle, Contamination Free Jar, This Packaging Ensures Maximum Hygiene And Efficacy, Dispenses Easily With A Single Press, Right Amount of The Cream Comes Out With Easy Application

### How to Use :

**Step 1 :** Pump out an adequate amount of cream onto your palm

**Step 2 :** Apply evenly on your face and neck

**Step 3 :** Gently massage with fingertips until completely absorbed

For best results, apply every night on Clean face



Presentation : 30gm  
M.R.P. : ₹699/-  
D.P. : ₹ 549/- ; P.V. :250



# Sklean®

Under eye cream

• Kojic Acid • Glycerine • Cucumber Extract • Wheat Germ Oil • Vitamin K

**Ingredients:** Purified water, Cetostearyl Alcohol, Glyceryl Monostearate, Emulsifying Wax, Light Liquid Paraffin, Stearic Acid, Kojic Acid, Dipalmitate, Aloe barbadensis (Aloevera Extract), Cyclomethicone, Glycerine, Cucumis sativus Extract, Triticum Durum, & Magnesium Ascorbyl Phosphate, Phytonadione, Methyl Paraben, Triethanolamine, Sodium Metabisulfite, Propyl Paraben, Sodium sulfite, Ethylenediaminetetraacetic Acid, Allantoin and Fragrance.

**Under Eye Cream:** Moisturizes, provides noticeable tightening and lifting, tones and improves appearance of wrinkles and fine lines.

**Direction for use:** Press pump until a small amount of cream comes out from rollerball. Use gentle pressure and apply to under- eye area until it's absorbed morning and night.



Presentation : 15ml  
M.R.P. : ₹249/-  
D.P. : ₹ 199/- ; P.V. :60

# Nigri Care Cream

***SKIN DISCOLORATION IN NAPE, ELBOWS,  
KNEES, KNUCKLES, BACK***

## **BENEFIT OF USING IT:**

- ➔ Lightens Dark Patches
- ➔ Treats Acanthosis Nigricans
- ➔ Gently Exfoliates
- ➔ Deeply Moisturizing
- ➔ Nourishes Dry Skin



## **Ingredients:**

Purified Water  
Lactic Acid  
Urea  
Prunus Amygdalus Dulcis (Sweet Almond) oil  
Lecithin  
Retinol  
Aloe Barbadensis Leaf juice  
Glycerine

**Presentation : 60gm**  
**M.R.P : ₹ 449/-**  
**D.P. : ₹ 349/- ; P.V. : 175**

# Param SUNDARI™ BEAUTY SOAP



## Ingredients

Cocos nucifera oil + Ricinus Communis oil + Sucrose + Glycerine + EDTA-Sodium + BHT + Propylene Glycol + Aqua + Fragrance & FDC colours + Rosa centifolia Extract + Honey.



## 100% Natural Beauty Soap

Enriched with **Rose & Honey**  
Deep Cleanses to Prevent **Acne & Pimples**.



## Benefits

- Deep cleans the skin.
- Prevents **Acne & Pimple**.

Presentation : 75gm  
M.R.P : ₹ 90/-  
D.P. : ₹ 72/- ; P.V. : 20



# Mamagic™ HALDI CHANDAN SOAP

Herbal Soap

Enriched with haldi & chandan

## Benefits

- It helps to clear skin.
- Makes feel soft & nourish.

100% Natural Transparent Soap



Presentation: 75gm  
M.R.P : ₹ 90/-  
D.P. : ₹ 72/- ; P.V. : 20



**Ingredients :** Ingredients: Chitraka 225mg, Vanadraka 108mg, Sariba 12mg, Chopchini 6mg, Nimba Twak 4mg, Dharu Haridra 2mg, Vacha 2mg, Usheeram 2mg, Dhanyaka 2mg, Jeeraka 2mg, Vidangam 2mg, Yashtimadhu 2mg, Kutaja 2mg, Jyothismathi 2mg, Devadaru 2mg, Krishna Jeeraka 2mg, Bakuchi 2mg, Guggulu 1.75mg, Aloe vera 10mg.

### Benefits

- Keeps skin clear, glowing, radiant & skinfit.
- Helps the skin retain its natural moisture with a blend of natural oils.
- Hydrates the skin and fights dark spots for an even skin tone.
- Protect the skin from pimples, body odour & prickly heat.



**Presentation: 75gm**  
**M.R.P : ₹ 60/-**  
**D.P. : ₹ 50/- ; P.V. : 10**

## Klean Care®

### NEEM

ANTI BACTERIAL SOAP

For All Skin Types



### Ingredients

Cocos nucifera oil + Ricinus communis oil + Stearic acid + Mynstic acid + Sorbitol + Sucrose + Glycerine + EDTA-Soudium + BHT+ Propylene Glycol + Aqua+ Fragrance + FDC colour +Azadirachta indica extract + Ocimum sanctum Extract.

### Benefits

- Kills bacteria.
- Prevents itching, infection.
- Deeply cleans & hydrates to skin.



**Presentation: 75gm**  
**M.R.P : ₹ 90/-**  
**D.P. : ₹ 72/- ; P.V. : 20**

## Charcoal

GOOD FOR OILY SKIN SOAP

Being Natural Activated

**Ingredients :** Cocos nucifera oil, Ricinus communis oil, Glycerine, Sorbitol, Sugar, Propylene Glycol, EDTA, Stearic Acid, ricinus communis oil, Cdea, BHT, Sod. Hydroxide, Precipitated Carbon, Peg-6000, Titanium Dioxide/Aqua, Fragrance.

### Benefits

- Removes dirts, impurities & excess oil.
- Brightens the skin.
- Gives youthful looks.
- Clear, soft & pimple free skin.



**Presentation: 75gm**  
**M.R.P : ₹ 90/-**  
**D.P. : ₹ 72/- ; P.V. : 20**





# 7 TYPES OF ASSORTED SOAPS WITH MUG



**Presentation : 7 Piece(Assorted Soap)**

**M.R.P : ₹ 700/-**

**D.P. : ₹ 575/- ; P.V. : 250**



# Premium Quality

## HAND MADE SOAP

(Two in One)

*Bringharaj Hair Care Bar  
& Kojic Acid soap*



Presentation : 2 in 1  
M.R.P : ₹ 199/-  
D.P. : ₹ 175/- ; P.V. : 25

*Bringharaj Hair Care Bar  
& Charcoal green Clay soap*



Presentation : 2 in 1  
M.R.P : ₹ 199/-  
D.P. : ₹ 175/- ; P.V. : 25

*Bringharaj Hair Care Bar  
& Arbutin soap*




Presentation : 2 in 1  
M.R.P : ₹ 249/-  
D.P. : ₹ 225/- ; P.V. : 25




## Benefits



 Suitable for Hair, Face, Body.

 Anti-Dandruff.

 Promotes hair growth.

 Prevents Premature Greying.



**Suvidacare**<sup>®</sup>  
CHANGING LIVES NATURALLY

# *Toiletry Kit*



Presentation : 5 Items x 50ml  
M.R.P : ₹ 495/-  
D.P. : ₹ 395/- ; P.V. : 177

## Moisturizing **BODY OIL**

Enriched with Spanish Extra Virgin  
Olive Oil & Sandal Wood Oil

### Ingredients

Olive oil+Almond oil+Sandalwood oil+Daruharidra+Arjuna+  
Karpoor+ Manjistha.

### Benefits

- It makes skin soft, smooth, glowing & healthy.
- Helps to hydrate the skin.
- Guards the minor rashes, discolouration and dryness.
- Prevents premature aging.

### Methods of use

Apply daily before or after bath all over your body.  
Regular massage develops shapes  
& muscles.



For  
Soft  
&  
Smooth  
Skin

Presentation : 100ml., 200ml., 500ml.  
M.R.P. : ₹ 100/-, ₹ 150/-, ₹ 275/-  
D.P. : ₹ 80/-, ₹ 120/-, ₹ 220/-  
P.V. : 17, 23, 42



# GLYCERINE

### Benefits

- It increase skin hydration.
- Relieves dryness.
- Moisturizes skin.
- Reduces acne.
- Anti-Ageing treatment.
- Reduces Dulness.

### Ingredients

Glycerin+ Rose oil

99%  
Pure



Presentation : 30gm., 200gm.  
M.R.P. : ₹ 50/-, ₹ 180/-  
D.P. : ₹ 44/-, ₹ 140/-  
P.V. : 9, 29

# Moisturizing Lotion

Enriched with Vitamin E

FOR ALL SKIN TYPES

## Ingredients

Purified water, Isopropyl Myristate, Emulsifying wax, Caprylic Capric Triglyceride, Glyceryl monostearate, Cetostearyl Alcohol, Glycerin, Tocopheryl acetate (Vitamin E), Carbomer, Dimethicone, Dimethyl dimethylol hydrantoin, Lactic Acid, Fragrance, Sodium PCA, Sodium benzoate, Triethanolamine.

## Benefits:

- Moisturize the skin
- Reduce pore appearance
- Improve Skin Tone

## Direction

Pump out the sufficient amount of lotion on your palm and spread all over your face and body. Allow it to absorb.



**Presentation : 100 ml.**  
**M.R.P. : ₹ 599/-**  
**D.P. : ₹ 499/- ; P.V. : 250**

# ICE

## COOL

Prickly Heat Powder

Mint Menthol

### BENEFITS:-

- Instant cooling relief from prickly heat, itching and burning sensation and heat rashes.
- Unique bacteriostatic formula.
- Proprietary ayurvedic medicine.
- Control bacterial growth and infection.

**INDICATION :** For quick & effective treatment of prickly heat and other related causes of the skin, It effectively treats dhobi itch and athlete's foot.

**Presentation : 120 gm.**

**M.R.P. : ₹ 100/-**

**D.P. : ₹ 80/- ; P.V. : 23**

# Rose Water



*Enriched with natural source of Vitamin-E, Aloe vera, Rose extract*

## Benefits:

- 1. Cleansing:** It gently cleanses the skin and gives sparkling glow.
- 2. Moisturizing:** Moisturizes your skin, removes dryness, dullness and provides a soft touch.
- 3. Toning:** Rose extract is a very good toner for skin, which helps in tightening the skin.
- 4. Refreshing:** The goodness of rose helps in relaxing tired skin, as a result the skin look fresh.



Presentation : 100 ml.

M.R.P. : ₹ 199/-

D.P. : ₹ 160/- ; P.V. : 80



# Rice Face Toner With Kumkumadi

**For Glowing & Hydrating Skin**

## Benefits:

- Makes skin soft & glowing.
- Reduce pigmentation & blemishes.
- Helps to prevent acne & pimples.
- Controls production of excess oil.
- Helps to make skin tone even.



Presentation : 100 ml.

M.R.P. : ₹ 199/-

D.P. : ₹ 160/- ; P.V. : 80



**REPAIR & STRENGTHEN**  
Nourish Your Hair For Hydration & Strength

**Anti Hair Fall Shampoo**  
Plant-Based Keratin,  
Organic Moroccan Argan Shampoo,

MAMA CARE SHAMPOO Is Made With Organically Procured Environment Friendly Vegan Ingredients. Just How Vegetables Keep Us Healthy On The Inside, Our Plant-based Products Contains Cleanest, Chemical-free & Natural Nutrients We Need To Stay Healthy On The Outside!

**Method of Use :** Pump, Lather, Rinse And Follow With the Mama Care Anti- Hairfall Shampoo For Best Results. Please Note That Plant-based Products Do Not Lather As Much As The Other Chemical-based Products. Apply More Water & Use Less Shampoo Than You. Think Safe For Coloured Hair.

Enriched With  
Biotin, Vitamin E, Argan Shampoo  
& Macadamia Shampoo



Presentation : 250ml  
M.R.P. : ₹ 399/-  
D.P. : ₹ 299/- ; P.V. :100



# Heaven Girl

Hair Tonic

## The Best Herbal Solution for Hair

### Benefits:

- Nourish hair root & scalp.
- Improves blood circulation to hair follicles.
- Stimulates growth of thicker, healthier and longer hair.
- Checks loss of hair 'Alopecia' & arrests dandruff



### How To Use:

Pump out a generous quantity of the oil depending on your hair volume & length. Gently massage onto scalp focusing on the roots, then massage it through the length of your hair. Leave on for at least half an hour before shampoo. For better results keep it overnight.



Presentation: 200ml.  
M.R.P. : ₹ 249/-  
D.P. : ₹ 200/- ; P.V. :79



Sukh Sathi™

## Bhringraj Oil

All Hair Types

### Benefits:

- Tame frizz.
- Reduce hair loss.
- Boost gloss.
- Balance scalp condition.
- Repair hair damage caused by heat & chemical treatment.

### How To Use:

Pump out a generous quantity of the oil depending on your hair volume & length. Gently massage onto scalp focusing on the roots, then massage it through the length of your hair. Leave on for at least half an hour before shampoo. For better results keep it overnight.



Presentation: 200ml.  
M.R.P. : ₹ 299/-  
D.P. : ₹ 239/- ; P.V. :85

## Bhringraj

### Shampoo

With Bhringraj, Amla & Jatamansi

Sukh Sathi™

Sukh Sathi Shampoo, formulated with natural ingredients that helps to Strengthen hair follicles. 'Clarify blocked roots. Smoothen hair cuticles that make hair glossy and lustrous.

**Method Of Use :** Wet hair thoroughly with lukewarm water to open the cuticles gently. Apply a sufficient amount of shampoo as per the length and volume of your hair. Massage well into soaking wet hair and scalp using fingertips for 2-3 minutes. Rinse thoroughly with plenty of plain water. Once all the shampoo has been washed off, follow with a cold-water rinse to seal the cuticles.

*Repair hair damage*  
*Promotes Hair Growth*  
*Reduces Dandruff*



Presentation : 250ml  
M.R.P. : ₹ 399/-  
D.P. : ₹ 299/- ; P.V. :97



Hair Care

# ONION HAIR OIL

ADVANCE FORMULA

HAIR GROWTH

ANTI HAIR FALL

DANDRUFF CONTROL

NON STICKY/NON GREASY

## Composition:

Each ml contains:-

Onion oil (Allium cepa)	2.00%
Almond (Prunus amygdalus)	2.00%
Soya oil (Glycine max)	1.00%
Olive oil(Olea europaea)	1.00%
Bringraj oil(Eclipta alba)	1.00%
Godhum oil(Triticum sativum)	0.50%
Brahmi oil(Bacopa monnieri)	0.50%
Amla oil(Embllica officinalis)	0.50%
Shikakai oil(Acacia concinna)	0.50%
Light liquid paraffin	q.s.
Preservation	q.s.
Essence	q.s.

Presentation : 100ml

M.R.P. : ₹ 360/-

D.P. : ₹ 288/- ; P.V. : 134



# ONION Shampoo

Enriched With Onion Extract

## Composition:

Each 100ml contains :

Plandu(Allium cepa)	5gm
Mahanibu(Murraya koenigii)	0.5gm
Chay(Camellia sinensis)	2gm
Manjistha(Rubia cordifolia)	1 gm
Garitkumari(Aloe barbadensis)	2.5gm
Ratanjoot bhed (Alkana tinctoria)	1 gm
Neem (Azadirachta indica)	2gm
Yav Bhed(Avena byzantina)	1gm
Brahmi(Bacopa Monnier)	1.5gm
Harad(Terminalia chebula)	1gm
Coffea(Coffea arabica)	2gm
Gulab Full(Rose centifolia)	1gm

Presentation : 250ml

M.R.P. : ₹ 349/-

D.P. : ₹ 299/- ; P.V. : 100



## Indication:

Controls Hairfall

Controls Dandruff

Promotes Hair Growth





# Hair Vitalizer

## Procapil Serum

WITH MULTI PEPTIDES REDENSYL & ANAGAIN

### PROFESSIONAL PROCAPIL HAIR SERUM

#### BENEFITS:

- Formulated to strengthen hair & Prevent hair loss Naturally
- It majorly acts on hair roots & stimulates hair growth phase by stimulates reactivation of dermal pappila cells.
- Multi peptides in hair vitalizing serum block the effects of DHT hormones & forget hair growthat the cellular level.

#### Key Ingreddients:

Procapil 3.00%, Redensyl 3.00%, Anagain 2.00%. Lysolecithin 0.20%, Propylene Glycol 5.00%, Follicusan 3.00%, Pullulan 0.20%, Dimethyl Isosorbide 5.00%, Glycerine 2.50% Polysorbate- 20 0.80%, Butylene Glycol 1.00% Vitamin- B5 0.20%, EDTA 0 15%, Rosemary 1.00%, Capila longa 1.00% with Demineralized water & Fragrance

#### Usage:

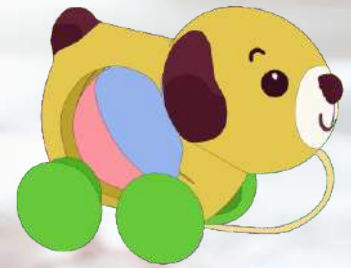
- Apply Nova Glow Hair Vitalizer Procapil serum in the morning & before going to bed.
- Spray the serum on the affected area of your scalp. use the serum on clean and dry scalp.
- Gently massage the serum on your scalp a minute and leave it to get absorbed.
- Leave the serum overnight for best results. Procapil hair growth serum does not make your scalp greasy, hence frequent hair wash is not compulsory.



**Presentation: 30ml.**

**M.R.P. : ₹ 799/-**

**D.P. : ₹ 649/- ; P.V. :289**



# Baby Earth™

## BABY DIAPER CREAM

• Almond oil • Yasad Bhasma • Aloe vera • Lemon oil

Pure • Gentle • Safe

### Ingredients:

An Ayurvedic Proprietary Medicine.

Each gm contains :

Yasad bhasma	3.00%
Aloe vera	3.00%
Almond oil	1.00%
Lemon oil	0.50%
Cream base	q.s.

### Benefits

Help to Cure the dry skin, moisturizing the skin & prevent diaper rash.



**Presentation: 30gm**  
**M.R.P. : ₹ 72/-**  
**D.P. : ₹ 57/- ; P.V. : 23**

# Baby Earth™

## AD

### BABY MASSAGE OIL

WITH NATURAL SOURCE OF VITAMIN A, D, E & OLIVE OIL

### Benefits

Baby Earth AD Baby massage oil is an ayurvedic medicine. It helps strengthen bones and muscles. It improves sleep patterns, enhances emotions and improves mood. Boosts immune system, enhances coordination of brain, improves intelligence, promotes growth.

### Ingredients:

Each 5 ML contains:

Olive oil (Olea europaea)	2 %
Arachis oil (Arachis hypogaea)	50 %
Godhum oil (Triticum sativum)	0.1 %
Almond oil (Prunus amygdalus)	20 %
Gajar Beej oil (Daucus carota)	0.01 %
Basil oil (Ocimum sanctum)	0.01 %
Soya Been oil (Glycine max)	q.s.
Preservatives	q.s.



**Presentation: 100ml**  
**M.R.P. : ₹ 149/-**  
**D.P. : ₹ 127/- ; P.V. : 43**



# Eitch Za®

सुविधाकेयार ईचजा

**FUNGAL LOTION**

An Ayurvedic Proprietary Medicine

## Composition:

Each ml contains:

Borex (Sibi biboras)	1.00%
Yasad bhasma (Classical)	3.00%
Chamomile oil (Matricaria chamomilla)	1.00%
Castor oil (Ricinus communis)	0.50%
Salicylic acid (Salicylic acidium)	10.00%
Benzoic acid (Concentrata conquasstum crat)	3.00%
Base	q.s.

## Indication :

- Itching.
- Fungal infection.
- Ringworm.
- Boils Eczema.
- Skin Disease.

**Presentation : 15ml**

**M.R.P. : ₹ 75/-**

**D.P. : ₹ 56/- ; P.V. : 18**



# Eitch Za Malam

## Composition:

Each ml contains:

Aloe vera (Aloe barbadensis)	1.00%
Vedmushak (Salix Caprea)	3.00%
Chamomile oil (Matricaria chamomilla)	2.00%
Castor oil (Ricinus communis)	0.50%
Kapura (Cinnamomum camphora)	1.00%
Salicylic acid	7.00%
Benzoic acid	3.00%
Base	Q.S

## Indication :

- Itching.
- Pimples.
- Ringworm
- Boils Eczema.
- Skin Disease.

**Presentation : 15ml**

**M.R.P. : ₹ 25/-**

**D.P. : ₹ 20/- ; P.V. : 4**



# FAT Gone<sup>®</sup> Capsule

## Composition :

### Each capsule contains :

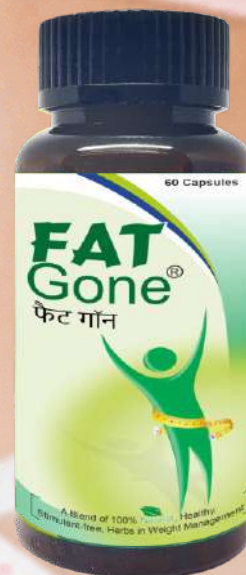
Vilayati imli	Garcinia cambogia	150 mg
Madhavi	Hiptage madablota	70 mg
Guar beej	Cyamopsis psoraloides	50 mg
Guggul	Commiphora mukul	50 mg
Green Tea	Camellia sinensis	30 mg
Trikatu	Classical	30 mg
Triphala	Classical	30 mg
Methi	Trigonella foenum graecum	30 mg
Bhringraj	Eclipta alba	20 mg
Punarnava	-Boerhaavia diffusa	15 mg
Neem chal	Azadirachta indica	10 mg
Haldi	Curcuma longa	10 mg
Kutki	Picrorhiza kurroa	5 mg
Preservatives & Excipients		q.s.

### Benefits:

- Fat gone is a good source of fiber.
- Fat gone help you lose weight.
- Fat gone improve your digestion.
- Fat gone lower your cholesterol levels



A Blend of 100% **Natural**, Healthy,  
Stimulant-free, Herbs in Weight Management



**Presentation : 60 capsules**

**M.R.P. : ₹549/-**

**D.P. : ₹ 399/- ; P.V. : 180**

# FAT Gone<sup>®</sup> Sliming Oil

An Ayurvedic proprietary medicine

Composition:

Each 10ml oil contains:

Ginger Oil (Zingiber officinale)	5.00%
Kalimirch (Piper nigrum)	3.00%
Olive Oil (Olea europaea)	3.00%
Kokum (Garcinia indica)	3.00%
Fenugreek Oil (Trigonella foenum-graecum)	3.00%
Chitrak Mool (Plumbago zeylanica)	2.00%
Punarnava (Boerhaavia diffusa)	2.00%
Haldi (Curcuma longa)	2.00%
Nagarmotha (Cyperus rotundus)	2.00%
Majuphal (Quercus infectoria)	2.00%
Lehsun (Allium sativum)	2.00%
Lavender Oil (Lavandula angustifolia)	2.00%
Ajwain Satva (Trachyspermum Ammi)	2.00%
Amla (Embllica officinalis)	1.00%
Badam Oil (Prunus Amygdalus)	1.00%
Lemon Oil (Citrus limon)	1.00%
Clove Oil (Syzygium aromaticum)	1.00%
Harad (Terminalia chebula)	1.00%
Baheda (Terminalia bellirica)	1.00%
Flax Seed Oil (Linum usitatissimum)	1.00%
Dalchini Oil (Cinnamomum zeylanicum)	1.00%
Godhum Oil (Triticum sativum)	0.50%
Pippermint Oil (Mentha piperita)	0.50%
Grape Seed Oil (Vitis vinifera)	0.50%
Karpoor (Cinnamomum Camphora)	0.50%
Til Oil (Sesamum indicum)	q.s.
Preservatives	q.s.



Indication : Helps to fight stubborn fat, reduces flab  
& firms skin, increase skin elasticity,  
Improves blood circulation in affected parts,  
tones muscle and mobilize unwanted fat.



**Presentation : 100ml**

**M.R.P. : ₹699/-**

**D.P. : ₹ 480/- ; P.V. : 240**

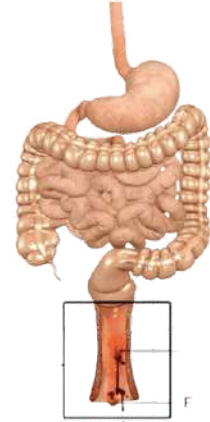
# PILES Care Cream

For treatment of Haemorrhoids (Piles), Anal Fistula Reduces bleeding swelling, Relieves Itching & Pain

## Composition:

Each gm contains :

Kalihari	100 mg	Aak Pan	30 mg
Kuth	100 mg	Neem Giri	30 mg
Sonth	100 mg	Harital	20 mg
Pipper	100 mg	Mansil	20 mg
Kaner	30mg	Khunkharaba	200 mg
Vavding	30mg	Rasaunt	200 mg
Chitrak Mool	30 mg	Kapur	200 mg
Danti Mool	30 mg	Trinkant	100 mg
Kadvi Tori	30 mg	Cream base	q.s.
Satyanasi	30 mg		



Presentation : 30gm  
M.R.P. : ₹ 135/-  
D.P. : ₹ 101/- ; P.V. : 47

## BURN CARE Ointment

100% NATURAL HERBAL PRODUCT

Effective in Burn, Wound, Cut & Anti-Bacterial

An Ayurvedic Proprietary Medicine

Composition: Each gm cream contains :

Devdaru (Cedrus Deodara)	5%
Neem (Azadirachta Indica)	3%
Usheer (Vetiveria Zaizan-ioides)	2%
Aloevera (Aloe barbadensis)	2%
Haldi (Curcumma Longa)	2%
Baheda (Terminalia Bellirica)	2%
Nagarmotha (Cyperus Rotundus)	0.5%
Cream base	q.s.
Preservatives	q.s.



Indications: Effective in Burn, Wound, Cut & Anti-Bacterial.



Presentation : 15gm  
M.R.P. : ₹ 89/-  
D.P. : ₹ 65/- ; P.V. : 26

## FOOT CURE Cream

TREATS CRACKED HEALS NATURALLY

### Composition

Each gm contains :

Isobgol	3% w/w	Latakarangoil	2% w/w
Pashanbhed	8% w/w	Sahora	4% w/w
Jivanti	8% w/w	Zergul	2% w/w
Manjistha	8% w/w	Yasadhasma	0.50% w/w
Daruhaldi	10% w/w	Haldi	5% w/w
Kampilak	7% w/w	Creanbase	q.s.
Ral	2.4% w/w		

### Indication :

- Moisturizing.
- Non Greasy.
- Soothing.



Presentation : 25gm  
M.R.P. : ₹ 72/-  
D.P. : ₹ 57/- ; P.V. : 19

# PainzoGel™

## Perfect Gel For Pain Relief

### Composition:

Diclofenac Diethylamine	IP	1.16% w/w
Eq. to Diclofenac Sodium		1% w/w
Linseed Oil	B.P.	3% w/w
Menthol	IP	5% w/w
Methyl Salicylate	IP	10% w/w
In a Gel base		q.s.



Back Pain



Neck Pain



Muscular Pain



Joint Pain



Presentation: 30gm  
M.R.P. : ₹ 85/-  
D.P. : ₹ 65/- ; P.V. :23

  
**Suvdacare**  
CHANGING LIVES NATURALLY

## PAIN BALM

**EXTRA STRONG**

### Indication :

- Temporary relief of arthritic pain.
- Reliefs of muscular sprain & pain.
- Symptomatic relief of lower back pain.



Presentation: 50 gm.  
M.R.P. : ₹ 140/-  
D.P. : ₹ 110/- ; P.V. :33



# Rehydration & Energy Drink



**Instant Energy**



## Composition:

Nutritional Information*	Per 100 gm.	Per Serving 25 gm.	RDA % per Serving
Calcium	120 mg.	30.0 mg.	5.0%
Phosphorus	92.7 mg.	23.18 mg.	3.86%
Vitamin C	55.0 mg.	13.75 mg.	34.37%
Vitamin D	300 I.U.	75 I.U.	18.8%
Energy Value	360 Kcal.	90 Kcal.	----
Protein	0 gm.	0 gm.	0.0%
Carbohydrates of which sugar (sucrose)	90 gm.	22.5 gm.	----
Fat & All type of fatty Acids	0 gm.	0 gm.	0.0%

**Vitamin C & D**

**Pure Glucose**

**Minerals**

**QUICK ENERGY**



Presentation : 500GM  
 M.R.P. : ₹ 195/-  
 D.P. : ₹ 156/-  
 P.V. : 48

**Instant Energy**



## Nimbu Pani

## Composition:

Nutritional Information*	Per 100 gm.	Per Serving 25 gm.	RDA % per Serving
Calcium	120 mg.	30.0 mg.	5.0%
Phosphorus	92.7 mg.	23.18 mg.	3.86%
Vitamin C	55.0 mg.	13.75 mg.	34.37%
Vitamin D	300 I.U.	75 I.U.	18.8%
Energy Value	360 Kcal.	90 Kcal.	----
Protein	0 gm.	0 gm.	0.0%
Carbohydrates of which sugar (sucrose)	90 gm.	22.5 gm.	----
Fat & All type of fatty Acids	0 gm.	0 gm.	0.0%

**Vitamin C & D**

**Pure Glucose**

**Minerals**

**QUICK ENERGY**



Presentation : 500GM  
 M.R.P. : ₹ 195/-  
 D.P. : ₹ 156/-  
 P.V. : 48

# Mouksh<sup>®</sup>

मोक्ष Churna

## Composition: *An Ayurvedic Proprietary Medicine*

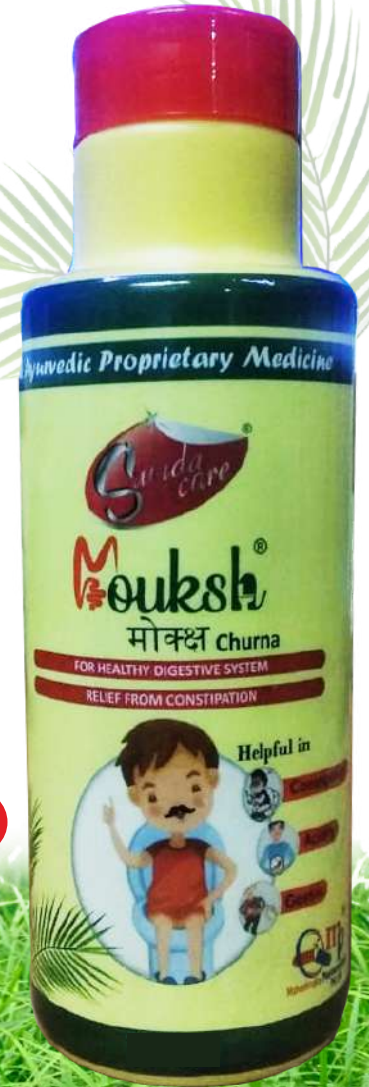
Each 10 gm powder contains:

Senna Leaves (Cassia aungstifolia)	39.0%
Sandha Namak (Sodii chloridum)	10.0%
Kala Namak (Sodium chloride)	5.0%
Nishota (Operculina turpethum)	5.0%
Harde (Terminalia chebula)	4.0%
Beheda (Terminalia bellirica)	4.0%
Amla (Emblca officinalis)	4.0%
Revand Chini (Rheum emodi)	2.5%
Kala Dana (Ipomoea hederacea)	2.0%
Saunf (Foeniculum vulgare)	2.0%
Dhaniya (Coriandrum sativum)	2.0%
Indrayan Mool (Citrullus colocynthis)	2.0%
Isabgol (Plantago ovata)	2.0%
Gulab Phool (Rosa centifolia)	2.0%
Amaltas (Cassia fistula)	2.0%
Harad Choti (Terminalia chebula)	2.0%
Jeera (Cuminum cyminum)	2.0%
Ajwain (Trachyspermum ammi)	2.0%
Kala Jeera (Carum carvi)	2.0%
Mulethi (Glycyrrhiza glabra)	2.0%
Vividang (Embelia ribes)	1.0%
Sarjikasara (Sodium bicarbonate)	0.5%
Nimbu Satav (Citrus limon)	0.5%
Hing (Ferula foetida)	0.3%
Preservatives	q.s.
Excipients	q.s.

FOR HEALTHY DIGESTIVE SYSTEM

RELIEF FROM CONSTIPATION

**Indications :** For Constipation, Indigestion & Flatulence.



**Helpful in**



**Constipation**



**Acidity**



**Gastric**

**Presentation : 100 gm +20 gm**

**M.R.P. : ₹ 120/-**

**D.P. : ₹ 95/- ; P.V. :20**

# ATULSI<sup>®</sup>

## COUGH SYRUP

### Composition:

Each 10 ml Contains :

Adulsa (Adhatoda Vasica)	200 mg
Tulsi (Ocimum Sanctum)	200 mg
Yastimadhu (Glycyrrhiza Glabra)	200 mg
Navsadar (Classical)	200 mg
Somlata (Ephedra vulgaris)	100 mg
Kantkari (Solanum xanthocarpum)	100 mg
Kakda Singi (Pistacia integerrima)	100 mg
Uplet (Saussurea Leppa)	100 mg
Haldi (Curcuma longa)	50 mg
Trikatu (Classical)	50 mg
Baheda (Terminalia bellirica)	50mg
Khuranj ajmo (Hyoscyamus niger)	50 mg
Bharangi (Clerodendron Serratum)	50 mg
Sat Pudina (Mentha Piperata)	6 mg
Nilgiri Tel (Eucalyptus)	0.006 mg
Sugar & Honey	q.s.
Colour & Flavour	q.s.

### Indication :

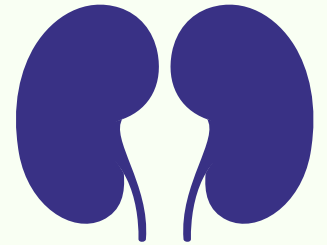
Effective in Dry and allergic cough, bronchitis normal cold.



**Presentation : 100 ml**  
**M.R.P. : ₹ 95/-**  
**D.P. : ₹ 72/- ; P.V. :30**

# PATHRI<sup>®</sup>

## TONIC



### Composition:

Each 5 ml contains extracts of :

Kulthi	250 mg
Pasanbhed	250 mg
Punarnava	200 mg
Apamarg	200 mg
Varun Chhal	200 mg
Inderjov	100 mg
Chharila	100 mg
Giloy	100 mg
Daru Haldi	50 mg
Palash	50 mg
Kamal Phool	60 mg
Yav Kshar	20 mg
Shweat Parpati	30 mg
Muli Kshar	20 mg
Flavoured Syrupy base	q.s.
Preservative	q.s.

**For Kidney and urinary**

**Bladder Stone**

### Indication :

- Dysuria, Crystalluria
- Burning Micturition.
- Oedema Generalized Anasarce.
- Non-Specific U.T.I's.
- Other Urinary Disorder.



**Presentation :225 ml**  
**M.R.P. : ₹ 249/-**  
**D.P. : ₹ 175/- ; P.V. :70**



Healthy Liver Tonic

## Composition:

Each 5 ml Contains :	
Sarpunkha (Tephrosia purpurea)	50 mg
Kasani (Cichorium intybus)	50 mg
Kakmachi (Solanum nigrum)	50 mg
Arjun (Terminalia arjuna)	50 mg
Kasundra (Cassia occidentalis)	50 mg
Biranj shipha (Solanum indicum)	50 mg
Jhau (Tamarix articulata)	50 mg
Bharingraj (Eclipta alba)	200 mg
Bhuiamla (Phyllanthus niruri)	200 mg
Punarnava (Boerhavia diffusa)	100 mg
Giloy (Tinospora cordifolia)	100 mg
Daru haldi (Berberis aristata)	100 mg
Amla (Emblica officinalis)	100 mg
Chitrak mool (Plumbago Zayanica)	100 mg
Vavding (Embelia ribes)	100 mg
Harde (Terminalia chabula)	100 mg
Pitpapda (Fumeria indica)	100 mg
Mooliksar (Raphanus sativus)	20 mg
Sugar	q.s.
Flavour & Colour	q.s.



## Indication :

Heptoprotective, Loss of appetite, Dystion, Liver Disorder, Help indigestion, Constipation.

**Presentation :200 ml**  
**M.R.P. : ₹ 160/-**  
**D.P. : ₹ 120/- ; P.V. :60**

## LIVER FORTE

Sugar Free



## Composition:

Each 10 ml Contains :

Bhringraj	800 mg
Bhui Amla	700 mg
Kashni	500 mg
Pitpapra	500 mg
Punernva	500 mg
Giloy	300 mg
Rohitak	300 mg
Daru Haldi	300 mg
Triphla	300 mg
Chitrakmool	100 mg
Viavidang	100 mg
Sarpunkha	100 mg
Aakmool	100 mg
Tulsi	100 mg
Kutki	100 mg
Kalmegh	100 mg
Kariyatu	80 mg
Makoi	80 mg
Arjun Chal	50 mg
Gulab Phool	50 mg
Kasundra Chhal	50 mg
Revand Chini	50 mg
Mooliksar	50 mg
Preservatives	q.s.
Colour & Flavour	q.s.
Syrup base	q.s.



Sugar Free



## Indication :

Protects liver against various Hepatotoxions.  
 Promotes Appetitive & Growth.

**Presentation :225 ml**  
**M.R.P. : ₹ 249/-**  
**D.P. : ₹ 175/- ; P.V. :70**

## Brain Care SYRUP

An Herbal Brain Booster



## Composition:

Each 10ml contains:	
Brahmi (Bacopa monnieri)	600 mg.
Shankpushpi (Convolvulus pluricaulis)	600 mg.
Vacha (Acorus calamus)	500 mg.
Ashwagandha (Withania somnifera)	500 mg.
Jatamansi (Nardostachys jatamansi)	300 mg.
Jyotismati (Celastus paniculatus)	300 mg.
Bhringraj (Eclipta alba)	300 mg.
Shatavari (Asparagus racemosus)	200 mg.
Giloy (Tinospora cordifolia)	100 mg.
Kushmand (Benincasa cerifera)	100 mg.
Preservatives	q.s.
Colour & Flavour	q.s.
Syrup base	q.s.



## Indication :

- Improves long term memory & Cognitive memory.
- Relief psychological & Physical Fatigue, Enhances intelligence, assimilation and memory.

**Presentation :200 ml**  
**M.R.P. : ₹ 110/-**  
**D.P. : ₹ 88/- ; P.V. :28**



## Iron Tonic

The Blood Purifier

An Ayurvedic Iron Tonic

## Composition:

Each 10 ml contains:	
Sigru (Moringa oleifera)	300mg
Kaunch (Mucuna pruriens)	200mg
Khajoor (Phoenix dactylifera)	200mg
Anjeer (Ficus carica)	200mg
Senna leaves (Cassia angustifolia)	150mg
Narkachoor (Curcuma zedoaria)	100mg
Daru haldi (Berberis aristata)	100mg
Anar (Punica granatum)	100mg
Gulab phool (Rosa centifolia)	50mg
Giloy (Tinospora cordifolia)	50mg
Pitpapda (Fumeria indica)	50mg
Neem (Azadirachta indica)	50mg
Harad (Terminalia chebula)	50mg
Baheda (Terminalia bellirica)	50mg
Draksha (Vitis vinifera)	50mg
Kalmegh (Andrographis paniculata)	50mg
Sounth (Zingiber officinale)	50mg
Pippali (Piper longum)	50mg
Punarnava (Boerhaavia diffusa)	50mg
Shatavari (Asparagus racemosus)	50mg
Vividang (Embelia ribes)	25mg
Nilifer (Nymphaea alba)	25mg
Amla (Emblica officinalis)	25mg
Ajwain (Trachyspermum ammi)	25mg
Safed Chandan (Santalum album)	25mg
Mundi (Sphaeranthus indicus)	25mg
Brahmi (Bacopa monnieri)	25mg
Tulsi (Ocimum sanctum)	25mg
Chitrak mool (Plumbago zeylanica)	25mg
Devदारु (Cedrus deodara)	25mg
Nagarmotha (Cyperus scariosus)	25mg
Patola patra (Trichosanthes dioica)	25mg
Kalmirich (Piper nigrum)	25mg
Kutki (Picrorhiza kurroa)	25mg
Loha Bhasma (Classical)	25mg

Improved Blood,  
 Restore Iron  
 Purification  
 of Blood



**Presentation :225 ml**  
**M.R.P. : ₹ 249/-**  
**D.P. : ₹ 175/- ; P.V. :70**

# Laliv<sup>®</sup>-4G

## Syrup

Liver tonic with Antacid, Alkalizer & Enzymatic Actions

**Composition :**

**Each 10 ml contains :**

Gokhru	Tribulus terrestris	300 mg.
Kutki	Picrorhiza kurrooa	600 mg.
Giloy	Tinospora cordifolia	400 mg.
Bhringraj	Eclipta prostrata	500 mg.
Bhumi amla	Phyllanthus niruri	300 mg.
Makoy	Solanum nigrum	300 mg.
Nagar motha	Cypercus rotundus	400 mg.
Aimoda	Pium graveolens	400 mg.
Sauth	Foeniculum vulgare	300 mg.
Dalchini	Cinnamoum verum	200 mg.
Sahdevi	vernonia cinania	400 mg.
Chadilla	Permillia perlata	300 mg.
Ikshumool	Saccharum officinarium	300 mg.
Kultha	Dolichos hifiorus	300 mg.
Kala Namak	Black salt	100 mg.
Jeera	Cuminum cyminum	300 mg.
Kali mirch	Pioer nigrum	300 mg.
Pudina	Mentha piperita	300 mg.
Triphala	Triphala	600 mg.
Aloevera	Aloe barbadensis	300 mg.
Kalmegh	Andrographis paniculata	400 mg.
Punarnave	Boerhavia diffusa	400 mg.
Bahera	Terminalia bellirica	400 mg.
Kasni	Cichorium intybus	200 mg.
Harad	Terminali chebula	200 mg.
Chitraka	Plumbago zeylanica	150 mg.
Vasa	Adhatoda vasica	200 mg.
Sarpunkha	Tephrosia purpuria	400 mg.
Pitpapara	Fumaria indica	200 mg.
Multi	Glycyrrhia glabra	200 mg.
Patoepatra	Trichpsanthes dioica	200 mg.
Tulsi	Ocimum sanctum	150 mg.
Sowa	Anethum sowa	150 mg.
Viavidang	Embelia ribes	200 mg.
Daruhaldi	Berberis aristata	100 mg.
Chavya	Piper retrofractum	100 mg.
Gulabphool	Rose damascena	100 mg.
Excipients		q.s.



### Benefits:

Benefits of LALIV 4G (Liver + Alkalizer + Antacid & Enzyme Syrup) Treatment of gout and kidney stones Acidity and other gastric problems Improves liver function Builds Immunity in Children Enhances liver detoxification process Treat all kinds of liver disease.

**Dosage : Children :** 1/2 teaspoonful twice a day.

**Adults :** 2 teaspoonful twice a day of as directed by the physician.

**Presentation :** 225 ml

**M.R.P. :** ₹ 199/-

**D.P. :** ₹ 150/- ; **P.V. :** 69



# UTERINE TONIC

## AN IDEAL UTERINE TONIC

### Composition:

Each 15 ml contains viscous extract derived from:

Ashaka (Saraca indica) St.Bk.	600 mg
Ashwagandha (Withania somnifera) Rt.	400 mg
Triphala (Classical)	400 mg
Ladhra (Symplocos racemosa) St.Bk.	400 mg
Kharefi (Sida cordifolia) W.Pl.	400 mg
Chandan (Santalum album) Ht.Wd.	300 mg
Shivlingi Beej (Bryonia laciniosa)* Sd.	300 mg
Punemava (Boerhaavia diffusa)Rt.	300 mg
Shatavari (Asparagus racemosus) Rt.	300 mg
Manjistha (Rubia cordifolia) St.	250 mg
Brahmi (Bacopa monnieri) W.Pl.	250 mg
Shankpushpi (Convolvulus pluricaulis) W. Pl.	200 mg
Gokhru (Tribulus terrestris) Fr.	200 mg
Nagarmotha (Cyperus rotundus) Rz.	200 mg
Vacha (Acorus calamus) Rz.	100 mg
Dashmool (Classical)	100 mg
Safed Musli (Chlorophytum borivilianum) Rt.	100 mg
Guduchi (Tinospora cordifolia) St.	100 mg
Ajmada (Apium graveolens) Fr.	100 mg
Sunthi (Zingiber officinale) Rz.	100 mg
Daruhaldi (Berberis aristata) St./Rt.	100 mg
Bibhitaki (Terminalia bellirica) Fr.	100 mg
Gurmar (Gymnema sylvestre) Lf.	100 mg
Munakka (Vitis vinifera) Fr.	100 mg
Anantimool (Hemidesmus indicus) Rt.	100 mg
Yashtimadhu (Glycyrrhiza glabra) St./Rt.	50 mg
Dhataki Phool (Woodfordia fruticosa) Fl.	50 mg
Gudhal Chhal (Hibiscus rosa-sinensis) St. Bk.	50 mg
Jatamansi (Nardostachys jatamansi) Rz.	50 mg
Jeera (Cuminum cyminum) Fr.	50 mg
Mochras (Bombax malabaricum) Exd.	50 mg
Kamal Phool (Nelumbium speciosum) Fl.	50 mg
Powder: Loha Bhasma (Classical)	2 mg
Sugar base	q.s.



Female Health Tonic  
Support and  
Rejuvenates the body

### Indication :

For Anaemia, Loss of Appetite  
Weakness, Leucorrhoea, Pelvic  
Pain, Back Ache, Painful &  
Irregular Menstrual Cycle.

Presentation : 225 ml  
M.R.P. : ₹ 249/-  
D.P. : ₹ 175/- ; P.V. :70



# Plato Cure

SYRUP



### Composition :

Each 5 ml contains :

Giloy (Tinospora cordifolia)	150 mg
Papaya (Carica papaya)	100 mg
Punernava (Boerhaavia diffusa)	150 mg
Ashwagandha (Withania somnifera)	70 mg
Aloe vera (Aloe barbadensis)	70 mg
Triphala (Classical)	75 mg
Tulsi (Ocimum sanctum)	50 mg
Neem (Azadirachta indica)	50 mg
Kalmegh (Andrographis paniculata)	50 mg
Kalimirch (Piper nigrum)	10 mg
Flavoured Syrup base	q.s.
Preservatives	q.s.

EFFECTIVE IN  
THROMBOCYTOPENIA



Presentation : 225 ml  
M.R.P. : ₹ 200/-  
D.P. : ₹ 140/- ; P.V. :62



# DIGESTIVE ENZYME SYRUP

### Composition :

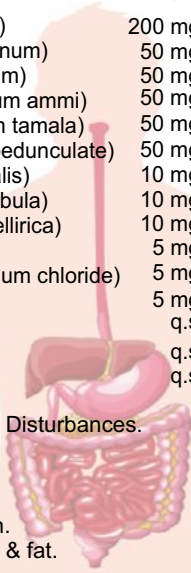
Each 10ml contains:

Draksha (Vitis vinifera)	200 mg
Jeera (Cuminum cyminum)	50 mg
Kali Mirch (Piper nigrum)	50 mg
Ajwain (Trachyspermum ammi)	50 mg
Tejpata (Cinnamomum tamala)	50 mg
Amlavetas (Garcinia pedunculata)	50 mg
Amla (Embolica officinalis)	10 mg
Harad (Terminalia chebula)	10 mg
Baheda (Terminalia bellirica)	10 mg
Hing (Ferula foetida)	5 mg
Sanchal (Unaqua sodium chloride)	5 mg
Yavakshar (Classical)	5 mg
Preservatives	q.s.
Colour & Flavour	q.s.
Sugar	q.s.



### Indication

- Anorexia & Digestive Disturbances.
- Indigestion.
- Dyspepsia.
- Flatulence.
- Abdominal distension.
- Indigestion of protein & fat.



Presentation : 200 ml  
M.R.P. : ₹ 175/-  
D.P. : ₹ 120/- ; P.V. :50



# Jivancare®

## Malt Chocolate Flavour With Energy Booster

### Composition :

Each 25 gm contains

Amalaki	300 mg
Gokhru	150 mg
Mulethi	100 mg
Gajar	100 mg
Ashwagandha	100 mg
Vidharikand	50 mg
Palak	50 mg
Guduchi	40 mg
Sounth	10 mg
Maricha	10 mg
Pipli	10 mg
Flavoured syrupy base enriched with Honey	q.s.
Preservatives:	
Sodium Benzoate	
Methyl Paraben Sodium	
Propyl Paraben Sodium	
Colour: Caramel	
Chocolate Flavours	

Benefits : It is 100% Ayurvedic. Safe and Natural, containing Powerful Herbs that help to provide stamina & energy. It not only makes one physically strong & strengthens the immune system but also keeps the youthful vigour.



Presentation : 400 gm  
M.R.P. : ₹ 549/-  
D.P. : ₹ 400/- ; P.V. :200

# Sukh Sundari

## A Complete Ayurvedic Tonic for Women Health

### Goodness of sixteen herbs

Composition :

Each 5ml contains extractives derived from :

Ashoka ( <i>Saraca indica</i> )	1750 mg.
Lodhra ( <i>Symplocos racemosa</i> )	250 mg.
Dhatkipushpa ( <i>Woodfordia fruticosa</i> )	140 mg.
Amla ( <i>Embllica officinalis</i> )	30 mg.
Vibhitaki ( <i>Terminalia bellirica</i> )	30 mg.
Hareetaki ( <i>Terminalia chebula</i> )	30 mg.
Sunthi ( <i>Zingiber officinale</i> )	30 mg.
Amrasthi ( <i>Mangifera indica</i> )	30 mg.
Mustaka ( <i>Cyperus rotundus</i> )	20 mg.
Chandan Rakta ( <i>Pterocarpus santalinus</i> )	20 mg.
Safed Jeera ( <i>Cuminum cyminum</i> )	10 mg.
Daruharidra ( <i>Berberis aristata</i> )	10 mg.
Vasaka ( <i>Adhatoda vasica</i> )	10 mg.
Pippali ( <i>Piper longum</i> )	10 mg.
Neel Kamal ( <i>Nymphaea stellata</i> )	10 mg.
Shahad (Honey)	500 mg.
Flavoured syrup base	q.s.

### Benefits:

- Uterine stimulant and increases uterine contractions. it also stimulates the ovarian tissue.
- It is a rich source of antioxidants which prevents the cell damage caused by free radicals and manages skin problems like wrinkles.
- It is useful in acne and pimples due to its analgesic, anti-inflammatory and antibacterial properties.
- Enhances female health, boosts breast milk production, soothes joint pains, cures urinary complaints, calms boils and swellings and manages PCOS.
- Anti-metastatic properties to prevent tumors and cancers.



Presentation : 225 ml

M.R.P. : ₹ 249/-

D.P. : ₹ 150/- ; P.V. :75

# Shilajit Malt With Kesar

**Jivancare**<sup>®</sup>

### Goodness of twelve herbs

Each 10g contains

Ashwagandha ( <i>Withania somnifera</i> )	200mg
Amla ( <i>Embllica officinalis</i> )	150mg
Gokhru ( <i>Tribulus terrestris</i> )	100mg
Giloy ( <i>Tinospora cordifolia</i> )	100mg
Shankpushpi ( <i>Convolvulus pluricaulis</i> )	100mg
Mulethi ( <i>Glycyrrhiza glabra</i> )	100mg
Shatavari ( <i>Asparagus racemosus</i> )	100mg
Soya bean ( <i>Glycine Soja</i> )	80mg
Vidari kand ( <i>Pueraria tuberosa</i> )	50mg
Musli ( <i>Chlorophytum borivilianum</i> )	25mg
Sounth ( <i>Zingiber officinale</i> )	25mg
Sudha Shilajit (Classical)	250mg
Preservatives	q.s.
Colour	q.s.

### Benefits:

- Has anti-inflammatory and antioxidant effects.
- May improve cognitive function.
- Could treat altitude sickness.
- May fight bone loss.
- Could increase male fertility.
- May improve exercise performance and recovery.
- Could help treat iron deficiency anemia.
- May reduce seizure risk.
- Reducing stress.
- Improving sleep.
- Boosting athletic performance.
- Improving memory.
- Reducing inflammation.



**EXTRA POWER & ENERGY**



Presentation : 400 gm

M.R.P. : ₹ 749/-

D.P. : ₹ 500/- ; P.V. :250

# Phytosure

## Protein Powder

### Enriched with Vitamin + Minerals

#### Benefits:

- For pregnant woman and lactating mothers.
- For elderly people, for growing children.
- Meets the extra nourishment requirements.
- For convalescent and those on reducing diet.
- For infants after weaning.
- The product that help improve muscles.

#### For all age group

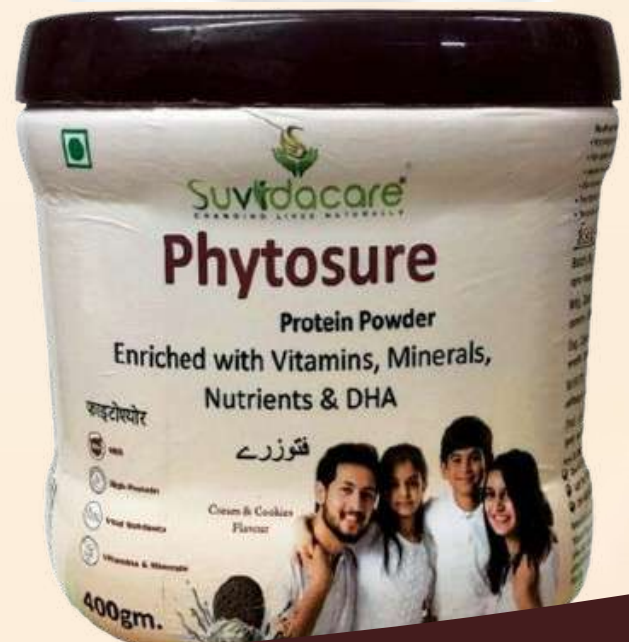
**Cream & Cookies  
Flavour**



#### Nutritional Information (Approx. Values) Each serving /100 gm.

Energy	440 Kcal.
Carbohydrates	53 g.
Soya Protein (20%)	20 g.
Fat	9 g.

		*** Daily Value
Potassium	1530 mg.	**
Calcium	882 mg.	26
Chloride	823 mg.	**
Phosphorus	706 mg.	23.33
Sodium	470 mg.	2.86
Magnesium	104 mg.	7.06
Vitamin C	69.9 mg.	25
Iron	22 mg.	**
Zinc	11.2 mg.	100
Niacinamide	8.8 mg.	16.67
Pantothenic Acid	4.05 mg.	**
Fluoride	3.25 mg.	**
Manganese	1.03 mg.	23
Vitamin B6	0.97 mg.	100
Vitamin B2	0.070 mg.	100
Copper	0.73 mg.	**
Vitamin B1	0.70 mg.	100
Iodine	294 mcg.	**
Molybdenum	138 mcg.	**
Chromium	38 mcg.	**
Selenium	5.9 mcg.	**
DHA	80 mg.	**
Excipients	q.s.	



Presentation : 400 gm

M.R.P. : ₹ 749/-

D.P. : ₹ 499/- ; P.V. :250



## PROTEIN POWDER

**INGREDIENTS:** Maltodextrin, Skimmed Milk Powder, Soy Protein Isolate, Whey Protein Concentrate, Methyl Sulfone Methane, Soy Fibre, Vegetable Oil, Boswellia Serrata, Cissus Quadrangularis extract, Moringa extract, Citrus Bioflavonoids, Ginger root extract, DHA, Hyaluronic Acid, Curcumin, Sweetener (INS 955), Stabilizer (INS 415), Vitamins & Minerals Premix, Flavour (Vanilla)

**Useful for :** Active People, Busy Executive, Sports Person, Recuperating patients & during convalescence.



Enriched with  
**Boswellia Serrata**  
**Cissus Quadrangularis**



**Citrus**  
**Bioflavonoids**



**Hyaluronic**  
**Acid**



**Moringa Extract**



**Boron & Calcium**

**Mango**  
**Flavour**



**Presentation : 200 gm**  
**M.R.P. : ₹ 599/-**  
**D.P. : ₹ 399/- ; P.V. :200**

## An Ayurvedic Multivitamin Syrup

**Indication:-** Useful in nervous debility & general weakness

An Ayurvedic Proprietary Medicine

**Composition:**

Each 10 ml. contains Aqueous Extract derived from :

**Name of**

Ingredients	Botanical Name	Qty
Ashwangandha	Withania omnifera	400 mg.
Vidarikand	Pueraria tuberosa	400 mg.
Brahmi	Bacopa monnieri	350 mg.
Shankhpushpi	Convolvulus pluricaulis	350 mg.
Kali Musli	Curculigo orchioides	250 mg.
Gokhru	Tribulus terrestris	250 mg.
Vach	Acorus calamus	250 mg.
Jatamansi	Nardostachys jatamansi	250 mg.
Shatavari	Asparagus racemosus	250 mg.
Amla	Phyllanthus emblica	200 mg.
Anjir	Ficus carica	100 mg.
Sonth	Zingiber officinale	50 mg.
Kali Mirch	Piper nigrum	50 mg.
Pipli	Piper longum	50 mg.
In a flavoured syrupy		q.s.



**Presentation: 200ml**

**M.R.P. : ₹ 149/-**

**D.P. : ₹ 100/- ; P.V. :35**

# INHALER CUM ROLL-ON



Twist to  
**INHALE**  
for Nasal  
**CONGESTION**  
Hold the Grip  
Twist to Apply  
for Headache  
**RELIEF**

## Benefits:-

- Inhale Deeply Medicated Vapors Through Inhaler for Refreshing Sensation & to Make Breathing Clear & Cool.
- Use Roll-On to Relief from Nasal Congestion, Neck Pain, Cold and Headache.

Presentation: 1 pc

M.R.P. : ₹ 89/-

D.P. : ₹ 72/- ; P.V. :33

## Klean Active<sup>®</sup>

### Nasal Spray

**ACTION STARTS IN 25SECONDS**



#### composition:

Yasti Madhu	Glycyrrhiza glabra	1.5%
Sonth	Zingber officinale	1.0%
Tulsi	Ocimum sanctum	1.5%
Vach	Acorus calamus	1.0%
Vaividang	Embelia ribes	1.0%
Pashanbhed	Coleus aromaticas	1.0%
Erand Mool	Ricinus aromaticus	1.0%
Nimbu	Citrus limon	3.0%
Gulab Phool	Rosa centifolia	1.0%
Saindhav	Lavan sodi chloridum	0.5%
Kapura	Camphora	0.1%
Tailpatra Oil	Eucalyptus globulus	Q.S.
Til Oil	Sesamum indicum	Q.S.

**Relieves Nasal Congestion**

**LASTS UP TO 12 HOURS**

- Original Prescription Strength
- Non-Drowsy
- Common Cold
- Sinus Pressure
- Allergies



Presentation: 10ml

M.R.P. : ₹ 120/-

D.P. : ₹ 90/- ; P.V. :45

**BAM! BAM!**

**ROLL ON**

**Get Freedom from Pain**

**Composition :**

Each 10ml oil contains:

- Karpur  
(Cinnamomum camphora) 20.00%
- Pudina Satva  
(Mentha piperita) 20.00%
- Ajwain Satva  
(Trachyspermum ammi) 20.00%
- Nilgiri Oil  
(Eucalyptus globulus) 12.50%
- Gaultheria Oil  
(Gaultheria procumbens) 10.00%
- Capsicum Oil  
(Capsicum annum) 2.50%
- Lemon Grass oil  
(Cymbopogon citratus) 2.50%
- Cajeput Oil  
(Melaleuca leucadendron) 2.50%
- Clove Oil  
(Syzygium aromaticum) 2.50%
- Badam Oil  
(Prunus amygdalus) 2.50%
- Shallaki  
(Boswellia serrata) 2.50%
- Dalchini Oil  
(Cinnamomum zeylanicum) 2.50%
- Preservatives q.s.

**Indication:**

Provide relief from Joint Pain,  
Headache, Back Pain, Body Ache,  
Neck & Shoulder Pain, and Muscle  
Stiffness & Sore Muscles



**Presentation: 10ml**

**M.R.P. : ₹ 199/-**

**D.P. : ₹ 150/- ; P.V. : 75**



# Eye Drops



## An Ayurvedic Proprietary Medicine



### Composition : Each ml contains:

Daru Haldi (Berberis aristata)	4%
Tulsi (Ocimum sanctum)	4%
Punernava (Boerhaaviadiffusa)	14%
Lahsun (Allium sativum)	2%
Yasti Madhu (Glycyrrhiza glabra)	4%
Safed Chandan (Santalum album)	3%
Lal Chandan (Pterocarpus santalinus)	2%
Pudina (Mentha piperata)	4%
Trifala (Classical)	8%
Haridra (Curcuma longa)	4%
Neem (Azadirachta indica)	4%
Bhringraj (Eclipta alba)	4%
Hastishundi (Heliotropium indicum)	4%
Mamira (Coptis teeta)	4%
Ajowan (Trachyspermum ammi)	3%
Gulab Phool (Rosa centifolia)	10%
Mukta Bhasma (Classical)	3%
Nagad Pan (Alectra parasitica)	3%
Chaksusya (Cassia absus)	4%
Saindhav (Sodi chloridum)	2%
Kapura (Cinnamomum camphora)	2%
Honey (Madhu)	8%
Preservatives	
Benzalokonium chloride	q.s.

### Benefits:

- Irritation
- Inflammation
- Allergic Conjunctivitis
- Ophthalmia
- Eye strain

**Presentation: 10ml**

**M.R.P. : 72/-**

**D.P. : ₹ 56/- ; P.V. :28**



# EAR DROPS



## 100% Ayurvedic and Natural

### Composition :

Manjistha	Rubia cordifolia	0.50%
Haridra	Curcuma longa	1.00%
Lehsun	Allium sativum	1.00%
Bharangi	Clerodendrum serratum	1.00%
Sarso Oil	Brassica campestris	10.00%
Turpentine Oil	Pinus longifolia	10.00%
Til Oil	Sesamum indicum	q.s.

### Benefits:

- Instantly soothes dryness, Itching & ear pain.
- Improves deafness & ringing in ear with regular use.



**Presentation: 10ml**

**M.R.P. : ₹ 120/-**

**D.P. : ₹ 90/- ; P.V. :45**

# 7-TULSI DROPS



With Curcumin

100% Ayurvedic Ark Drops

## 7 TYPES OF TULSI

### *Immunity Booster*

- ➔ BUILDS IMMUNITY
- ➔ ANTIOXIDANT PROPERTIES
- ➔ RELIEF FROM COUGH & COLD
- ➔ BUILDS RESPIRATORY HEALTH

Dosage : For Adults 2 drops (twice or thrice a day),  
For Children 1drop (twice or thrice a day), suggested  
with tea, warm water or as directed by the Physician.



50% FREE (20ml + 10ml Free)



### 7-TULSI DROPS

7-तुलसी ड्रॉप्स

With Curcumin

100% Ayurvedic Ark Drops

### *Immunity Booster*

- ➔ BUILDS IMMUNITY
- ➔ ANTIOXIDANT PROPERTIES
- ➔ RELIEF FROM COUGH & COLD
- ➔ BUILDS RESPIRATORY HEALTH

7 TYPES OF  
TULSI



## INGREDIENTS

- Ocimum Basilicum 20%
- Ocimum Americanum 10%
- Ocimum Gratissimum 15%
- Ocimum Canum 15%
- Ocimum Citridorum 10%
- Ocimum Sanctum 17%
- Ocimum Kilimandscharicum 10%
- Curcuma longa 3%

**Presentation:** 30ml (20ml + 10ml FREE)

**M.R.P.** : ₹ 249/-

**D.P.** : ₹ 200/- ; **P.V.** :100

Each sip is healthy

SUGAR FREE



## AMLA JUICE

With Tulsi, Moringa, Yastimadhu, Ashwagandha & Giloy

**100% NATURAL**

### Benefits:

Promotes immune function.  
Enhance liver health.  
Helps health digestion.  
Promotes heart health.  
Increase hair growth.  
Improves kidney health.



**IMMUNITY BOOSTER**

Presentation: 500ml

M.R.P. : ₹ 299/-

D.P. : ₹ 200/- ; P.V. :75

## NEEM KARELA JAMUN JUICE

With Mulethi, Methi, Tavak

### Benefits:

Lower the cholesterol level.  
Controls blood sugar level.  
Boost immunity.  
Helps in weight management.  
Natural antioxidant and blood purifier

**100% NATURAL**



**BALANCE BLOOD SUGAR LEVEL**

Presentation: 500ml

M.R.P. : ₹ 349/-

D.P. : ₹ 249/- ; P.V. :100

## ALOEVERA RAS

With Amla, Lavanga, Sunthi, Yavani, Maricha, Khajur

### Benefits:

Nutritional, Energizer, Testier, Healthier.  
Useful as tonic.  
Immunity booster.

**100% NATURAL**



Presentation: 500ml

M.R.P. : ₹ 349/-

D.P. : ₹ 249/- ; P.V. :100

# SWASTHA FIT JUICE



**ENRICHED WITH NONI GOLD**

**Rejuvenates body & restore energy level  
COMPLETE HEALTH SUPPLEMENT**

## Benefits

- It may act as an antioxidant, Immunity booster.
- It helps in weight management and maintains bone health.
- It may reduce high blood pressure
- It may have anti-inflammatory properties and anti-cancer activity



Nutrients	Value per 100 ml.	*RDA %
Energy	68.00 kcal	2.93
Protein	0.28 g	0.47
Fat	0.2 g	**
Carbohydrate	16.29 g	**
Sugars	0 g	**
Sodium	9.66 mg	0.46
Noni (Morinda citrifolia) extract	80 g	**
Garcinia (Garcinia cambogia) extract	4 g	**
Aloe Vera (Aloe barbadensis) extract	5 g	**
Amla (Emblica officinalis) extract	5 g	**
Ashwagandha (Withania somnifera) extract	3.33 g	
Grape Seed (Vitis vinifera) extract	0.90 g	**
In Liquid base	q.s.	



**Presentation: 1Lt.**

**M.R.P. : ₹ 2499/-**

**D.P. : ₹ 1699/- ; P.V. :1000**



# GILOY

## JUICE

**100% Natural Herbal Product.  
Immunity & Digestion Booster.**



### Composition:

Each 10 ml contains :

Giloy ( <i>Tinospora cordifolia</i> )	500mg
Amla ( <i>Emablica officinalis</i> )	300mg
Tulsi ( <i>Ocimum sanctum</i> )	100mg
Wheat grass ( <i>Triticum sativum</i> )	50mg
Papaya ( <i>Carica papaya</i> )	20mg
Curcumin ( <i>Curcuma longa</i> )	50mg
Preservatives	q.s.
Excipients	q.s.

**Indications :** Improves digestion, Treats Chronic Fever, Improves Eye Vision, Enhances overall immunity & Improves respiratory health. Helps to purify the blood. Enhances metabolic function. Combats liver disease & urinary tract infections.



**Presentation: 500ml**

**M.R.P. : ₹349/-**

**D.P. : ₹ 249/- ; P.V. :92**

# D-toxic

# Multiberry

# JUICE

## Composition

- |   |  |
|---|--|
| <ul style="list-style-type: none"> <li>• Ashwagandha Dry Ext</li> <li>• Bear Berry Dry Ext</li> <li>• Beet Root Dry Ext</li> <li>• Bilberry Dry Ext</li> <li>• Black Currant Dry Ext</li> <li>• Black Grapes Dry Ext</li> <li>• Blackberry Dry Ext</li> <li>• Blueberry Dry Ext</li> <li>• Cherry Dry Ext</li> <li>• Triphala Dry Ext</li> <li>• Cranberry Dry Ext</li> <li>• Curcumin Dry Ext</li> <li>• Dalchini Soft Ext</li> <li>• Elder Berries Dry Ext</li> <li>• Giloy Dry Ext</li> <li>• Ginger Dry Ext</li> <li>• Ginkgo Biloba Dry Ext</li> <li>• Goji Berry Dry Ext</li> <li>• Green Apple Dry Ext</li> <li>• Green Coffee Beans Dry Ext</li> <li>• Green Grapes Dry Ext</li> <li>• Kiwi Dry Ext</li> <li>• Kokam Soft Ext</li> <li>• Lemon Dry Ext</li> <li>• Vasa Dry Ext</li> </ul> | <p>Per Serving<br/>30ml.</p> <ul style="list-style-type: none"> <li>• Alovera Ras</li> <li>• Amla solt Ext</li> <li>• Anjeer Dry Ext</li> <li>• Arjuna Dry Ext</li> <li>• Bala Dry Ext</li> <li>• Brahmi Dry Ext</li> <li>• Draksha Dry Ext.</li> <li>• Winter Cherry Dry Ext</li> <li>• Garcinia Cambogia Dry Ext</li> <li>• Green Tea Dry Ext</li> <li>• Mulethi Dry Ext</li> <li>• Noni Soft Ext</li> <li>• Orange Soft Ext</li> <li>• Punarnava Dry Ext</li> <li>• Punica Grantham Dry Ext</li> <li>• Raspberry Dry Ext</li> <li>• Saffron Oil</li> <li>• Schizandra Berry Dry Ext</li> <li>• Sea Buckthorn Pulp</li> <li>• Shiguru Dry Ext</li> <li>• Litchi Dry Ext</li> <li>• Macaroot Dry Ext</li> <li>• Mangosteen Dry Ext</li> <li>• Mulberry Dry Ext</li> <li>• Tulsi Leaf Dry Ext</li> </ul> |
|---|--|

## Benefits of D-Toxic Juice :-

- 1- Prevent Cells And Tissues Against Free Radical Damages.
- 2- Strengthen Immunity.
- 3- Support Good Health Of Heart.
- 4- Promote Healthy Digestive System.
- 5- Keep Skin Youthful
- 6- Improve Well Being.

**Direction To Use :-** Take 25-30 MI Twice Daily With Water.



# LIVER CARE

CAPSULES

**With 10 Natural Herbs**  
**FOR HEALTHY AND STRONG LIVER**

**Composition :**

Each capsule contains:

Bhui amla (Phyllanthus niruri)	100 mg
Bharingraj (Eclipta alba)	100 mg
Punarnava (Boerhaavia diffusa)	100 mg
Kasni (Cichorium intybus)	30 mg
Chirayata (Swertia chirata)	30 mg
Kalmegh (Andrographis paniculata)	30 mg
Kutki (Picrorhiza kurroa)	30 mg
Sarpunkha (Tephrosia purpurea)	30 mg
Revand Chini (Rheum emodi)	30 mg
Giloy (Tinospora cordifolia)	20 mg
Preservatives	q.s.
Excipients	q.s.

**Benefits:**

Helps to manage fatty liver.  
Helps to protect liver from damage.  
Helps to improve liver function.  
Helps to regenerate liver cells.  
Powerful antioxidant and support liver cell integrity.  
Useful in jaundice & hepatitis B



Presentation : 60 Capsules  
M.R.P. : ₹ 499/-  
D.P. : ₹ 349/- ; P.V. :160

# MORINGA

CAPSULES

**With Curcumin**  
**Helps Support a Number of Bodily Functions & Organs**

**Composition :**

Each capsule contains:

Sahjan (Moringa pterygosperma)	300mg
Haldi (Curcuma longa)	100mg
Giloy Satav (Tinospora cordifolia)	50mg
Amla (Emblca officinalis)	20mg
Sea buckthorn (Hippophae rhamnoides)	20mg
Noni (Morinda citrifolia)	10mg
Preservatives	q.s.
Excipients	q.s.

**Indications :**

Aids in Weight Loss, Improves Energy Levels, Boosts Immunity, Promotes Bone Health, Improve liver health.



Presentation : 60 Capsules  
M.R.P. : ₹ 1299/-  
D.P. : ₹ 1000/- ; P.V. :500

# NIRBHOY D-STRESS

CAPSULES

*Helps to relieve stress and balances stress hormones. Improve brain function. Effective in Insomnia, Anxiety & Stress.*

**Composition:**

Each 500 mg capsule contains:

Ashwagandha (Withania somnifera)	200mg
Brahmi (Bacopa monnieri)	140mg
Jatamansi (Nardostachys jatamansi)	70mg
Shankpushpi (Convolvulus pluricaulis)	75mg
Vach (Acorus calamus)	10mg
Kesar (Crocus sativus)	5 mg
Preservatives	q.s.
Excipients	q.s.

**Indications :**

Helps to relieve stress and balances stress hormones, Improve brain function, Effective in Insomnia, Anxiety & Stress.



Presentation : 90 Capsules  
M.R.P. : ₹ 699/-  
D.P. : ₹ 399/- ; P.V. :160

# Ashwagandha

CAPSULES

**For a healthy immune & Stress Relief**

**Composition :**

Each capsule contains:

Ashwagandha (Withania somnifera)	200 mg
Gokharu (Tribulus terrestris)	50 mg
Varahikand (Dioscorea bulbifera)	50 mg
Vidharikand (Ipomoea digitata)	50 mg
Amla (Emblca officinalis)	50 mg
Shudh konch (Mucuna prurita)	50 mg
Musli( Chlorophytum borivilianum)	25 mg
Shudh Shilajit (Asphaltum Punjabianum)	25 mg
Preservatives	q.s.
Excipients	q.s.

**Benefits:**

Reduces stress & anxiety.  
Benefits in athletic performance.  
Reduces blood sugar levels.  
Reduces inflammation.  
Improve in sleep and boost in brain function.



Presentation : 60 Capsules  
M.R.P. : ₹ 499/-  
D.P. : ₹ 200/- ; P.V. :70

Presentation : 90 Capsules  
M.R.P. : ₹ 699/-  
D.P. : ₹ 499/- ; P.V. :240

**Composition :**

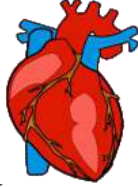
Each capsule contains:

Arjun Chal (Terminalia arjuna)	120mg
Lehsun (Allium sativum)	100mg
Sudha Guggulu (Commiphora mukul)	70mg
Chai (Camellia sinensis)	50mg
Sounth (Zingiber officinale)	40mg
Jatamansi (Nardostachys jatamansi)	20mg
Tulsi (Ocimum sanctum)	20mg
Sacred Fig (Ficus religiosa)	20mg
Giloy (Tinospora cordifolia)	10mg
Jyotishmati (Celastrus paniculatus)	10mg
Arni (Clerodendrum phlomidis)	10mg
Elaichi (Elettaria cardamomum)	10mg
Lavang (Syzygium aromaticum)	10mg
Kalimirsch (Piper nigrum)	5mg
Sudha Shilajit (Classical)	5mg
Preservatives	q.s.
Excipients	q.s.

**Indications :**

Coronary Heart Disease, Angina Pectoris, Congestive Heart Failure, Cardiac arrhythmia, Manage blood pressure, Lower bad cholest

FOR HEALTHY HEART



100% NATURAL HERBAL PRODUCT



Presentation :60 Nos.  
M.R.P. : ₹ 499/-  
D.P. : ₹ 349/- ; P.V. :160

Effective Pain Relief Formula

Faster onset of Action

**Composition :**

Each Capsule contains:

Guggulu Salai (Boswellia serrata)	100mg
Ashwagandha (Withania somnifera)	30mg
Trikatu (Classical)	30mg
Hadjod / Asthisamhara (Cissus quadrangularis)	25mg
Langali (Gloriosa superba)	20mg
Rasna (Pluchea lanceolata)	20mg
Kunduru (Coccinia indica)	20mg
Nirgundi (Vitex negundo)	20mg
Devdaru (Cedrus deodara)	20mg
Sudha Shilajit (Classical)	20mg
Nishot (Ipomoea torpethum)	20mg
Arjun Chal (Terminalia arjuna)	20mg
Erand mool (Ricinus communis)	20mg
Gokhru ( Tribulus terrestris)	20mg
Haridra (Curcuma longa)	20mg
Saunth (Zingiber officinale)	15mg
Methi (Trigonella foenum-graecum)	15mg
Sudha Vishamusti (Strychnos nux-vomica)	10mg
Kulanjan (Alpinia galanga)	10mg
Vetas (Salix caprea)	10mg
Chopchini (Smilax china)	5mg
Mahayograj guggulu (Classical)	5mg
Daruhaldi (Berberis aristata)	5mg
Amaltas (Cassia fistula)	5mg
Yograj guggulu (Classical)	5mg
Muktasukti Bhasma (Classical)	5mg
Jatiphala (Myristica fragrans)	5mg
Preservatives	q.s.
Excipients	q.s.

**Indications :** Relieves joint discomforts like morning stiffness, inflammation, and pain associated with joints and muscles. Helpful in curing swollen and painful joints.



Presentation :60 Nos.  
M.R.P. : ₹ 499/-  
D.P. : ₹ 349/- ; P.V. :160

A COMPLETE FAMILY HEALTH CARE CAPSULES  
IMPROVES HEALTH, EFFECTIVE IN LOSS OF APPETITE, LIVER OR DIGESTIVE DISORDER & BOOSTS IMMUNITY.

**Composition :**

Each capsule contains:

Ashwagandha (Withania Somnifera)	60mg
Brahmi (Bacopa monnieri)	50mg
Satavari (Asparagus rasemosa)	30mg
Anant mool (Hemidesmus indicus)	30mg
Manjistha (Rubia cordifolia)	30mg
Shankpushpi (Convolvulus pluricaulis)	30mg
Mulethi (Glycyrrhiza glabra)	30mg
Gokharu (Tribulus terrestris)	30mg
Safed Musli (Asparagus adscendens)	30mg
Vaividang (Embelia ribes)	25mg
Bhangra (Eclipta elba)	25mg
Giloy (Tinospora cordifolia)	25mg
Elaichi (Elettaria cardamomum)	20mg
Jaiphal (Myristica fragrans)	20mg
Amla (Embelia officinalis)	10mg
Harad (Terminalia chebula)	10mg
Baheda (Terminalia bellirica)	10mg
Sudha Shilajit (Classical)	10mg
Draksha (Vitis vinifera)	10mg
Jatamansi (Nardostachys jatamansi)	10mg
Kearsr (Crocus sativus)	5mg
Preservatives	q.s.
Excipients	q.s.

**Indications :** A complete family health care capsules. Improves health, effective in loss of appetite, liver or digestive disorder & boosts immunity.



100% NATURAL HERBAL PRODUCT



Presentation :60 Nos.  
M.R.P. : ₹ 499/-  
D.P. : ₹ 349/- ; P.V. :160

Reduce thyroid symptoms like muscle aches and cramps, fatigue, tiredness, and exhaustion.

**Composition :**

Each capsule contains:

Kachnar (Bauhinia variegata)	130mg
Sudha Guggulu (Commiphora wightii)	125mg
Mulethi (Glycyrrhiza glabra)	40mg
Haldi (Curcuma longa)	30mg
Punarnava (Boerhaavia diffusa)	30mg
Kasni (Cichorium Intybus)	20mg
Sahjan (Moringa oleifera)	20mg
Flax Seed (Linum usitatissimum)	20mg
Varun Chal (Crataeva nurvala)	15mg
Amla (Embelia officinalis)	10mg
Harad (Terminalia chebula)	10mg
Baheda (Terminalia bellirica)	10mg
Pippali (Piper longum)	10mg
Kalimirsch (Piper nigrum)	10mg
Saunth (Zingiber officinale)	10mg
Dalchini (Cinnamomum zeylanicum)	5mg
Tejpata (Cinnamomum tamala)	5mg
Preservatives	q.s.
Excipients	q.s.

**Indications :** Reduce thyroid symptoms like muscle aches and cramps, fatigue, tiredness, and exhaustion, Maintains optimum thyroid levels, Monitors body weight.



100% NATURAL HERBAL PRODUCT



Presentation :60 Nos.  
M.R.P. : ₹ 499/-  
D.P. : ₹ 349/- ; P.V. :160

**Composition :**

Each capsule contains:	
Tulsi (Ocimum sanctum)	100mg
Vasa (Adhatoda vasica)	80mg
Haldi (Curcuma longa)	65mg
Yashtimadhu (Glycyrrhiza glabra)	50mg
Bharangi (Clerodendrum serratum)	50mg
Kantkari (Solanum xanthocarpum)	30mg
Saunth (Zingiber officinale)	30mg
Pushkarmool (Inula racemosa)	30mg
Harad (Terminalia chebula)	10mg
Ajwain (Trachyspermum ammi)	10mg
Guduchi (Tinospora cordifolia)	10mg
Pippali (Piper longum)	10mg
Lavang (Syzygium aromaticum)	10mg
Jatanmansi (Nardostachys jatamansi)	10mg
Kalimirch (Piper nigrum)	10mg
KhasKhas (Papaver somniferum)	5mg
Preservatives	q.s.
Excipients	q.s.



**Indications :** Purifies and detox lungs, heals tissues damage, empowers circulatory and respiratory function.

**Presentation : 60 Nos.**  
**M.R.P. : ₹ 599/-**  
**D.P. : ₹ 399/- ; P.V. : 200**

**Insuline Management Expert  
Ayush Approved Formulation.**



**Composition:**

Each 500 mg capsule contains:	
Karela Ext. (Momordica charantia)	200 mg
Neem Ext. (Azadirachta indica)	100 mg
Jamun Ext. (Syzygium cumini)	100 mg
Mulethi Ext. (Glycyrrhiza glabra)	100 mg
Preservatives	q.s.
Excipients	q.s.

**Indication :**

\* Fasting Blood Sugar.  
\* Post Prandial Blood Sugar.  
Experts Anti-Oxidant Action.  
Clinical Improvement in Excessive Thirst, Hunger, Fatigue and Urination.



**Presentation : 100 Capsules**  
**M.R.P. : ₹ 699/-**  
**D.P. : ₹ 520/- ; P.V. : 200**

**Prostate Care**  
CAPSULES

100% NATURAL HERBAL PRODUCT  
FOR HEALTHY CONSCIOUS LIVING

**Composition :**

Each capsule contains:	
Gokhru (Tribulus terrestris)	55mg
Karanj (Pongamia glabra)	50mg
Varun Chal (Crataeva nurvula)	50mg
Shatavari (Asparagus recemosus)	50mg
Kulthi (Dolichos biflorus)	50mg
Punarnava (Boerhaavia diffusa)	30mg
Haldi (Curcuma longa)	25mg
Saunth (Zingiber officinale)	25mg
Sesame (Sesamum indicum)	25mg
Swarn Makshik Bhasma (Classical)	20mg
Sudh Shilajit (Classical)	20mg
Parval Bhasma (Classical)	20mg
Puga (Areca catechu)	20mg
Kachanar Chhal (Bauhinia variegata)	15mg
Yasad Bhasma (Classical)	15mg
Kumari (Aloe barbadensis)	15mg
Babul (Acacia nilotica)	10mg
Akik Pishti (Classical)	5mg
Preservatives	q.s.
Excipients	q.s.



**Indications :** Improves urinary tract function and flow, supports healthy prostate and normal male urogenital function and eases symptoms of enlarged prostate. Protects & Restore Prostate Gland.

**Presentation : 60 Nos.**  
**M.R.P. : ₹ 549/-**  
**D.P. : ₹ 399/- ; P.V. : 200**

**URIC ACID  
& GOUT CARE  
CAPSULES**

**Maintain the level of uric acid.  
Reduces the pain in the joints.**

**Composition :**

Each capsule contains:	
Guduchi (Tinospora cordifolia)	85mg
Ashwagandha (Withania somnifera)	40mg
Gokhru (Tribulus terrestris)	40mg
Punarnava (Boerhaavia diffusa)	40mg
Shuddha Guggulu (Commiphora wightii)	40mg
Varun Chal (Crataeva nurvula)	30mg
Nagarmotha (Cyperus rotundus)	30mg
Rasna (Pluchea lanceolata)	20mg
Mulethi (Glycyrrhiza glabra)	20mg
Sarpankha (Tephrosia purpurea)	20mg
Chireta (Swertia chirata)	20mg
Munditaka (Sphaeranthus indicus)	20mg
Nishoth (Operculina turpethum)	20mg
Vidarikand (Pueraria tuberosa)	20mg
Lehsun (Allium sativum)	20mg
Trikatu (Classical)	15mg
Amla (Emblca officinalis)	5mg
Harad (Terminalia chebula)	5mg
Baheda (Terminalia bellirica)	5mg
Haldi (Curcuma longa)	5mg
Preservatives	q.s.
Excipients	q.s.



**Indications :** Maintain the level of uric acid, increases the capability of kidneys and reduces the pain in the joints.

**Presentation : 60 Nos.**  
**M.R.P. : ₹ 549/-**  
**D.P. : ₹ 399/- ; P.V. : 200**

**Helpful in Constipation, Acidity, Gastric**



**BENEFITS :**

1. Improves digestion and appetite.
2. Reduce bloating, flatulence, acidity and gases.
3. Fights constipation - enables good bowel cleansing.
4. Effective gut cleanser, digests toxins.
5. Stimulates the agni-digestive fire and improves metabolism.
6. It can use for good absorption of food and to get maximum energy.

**An Ayurvedic Proprietary Medicine**

Each capsule contains :

Senna Leaves (Cassia angustifolia)	100mg
Nishota (Operculina turpethum)	50mg
Harad (Terminalia chebula)	30mg
Beheda (Terminalia bellirica)	30mg
Amla (Embolica officinalis)	30mg
Revand Chini (Rheum emodi)	30mg
Gulab Phool (Rosa centifolia)	30mg
Harad Choti (Terminalia chebula)	25mg
Saunf (Foeniculum vulgare)	20mg
Dhaniya (Coriandrum sativum)	20mg
Indrayan Mool (Citrullus colocynthis)	20mg
Yeshtimadhu (Glycyrrhiza glabra)	20mg
Kala Dana (Ipomoea hederacea)	20mg
Amaltas (Cassia fistula)	20mg
Kala Jeera (Carum carvi)	20mg
Isabgol (Plantago ovata)	15mg
Jeera (Cuminum cyminum)	10mg
Ajwain (Trachyspermum ammi)	8.5mg
Hing (Ferula foetida)	0.5mg
Kala Namak (Sodium chloride)	0.5mg
Sandha Namak (Sodii chloridum)	0.5mg
Preservatives	q.s.
Excipients	q.s.



**100% NATURAL HERBAL PRODUCT**

Presentation : 60 Capsules  
M.R.P. : ₹ 549/-  
D.P. : ₹ 399/- ; P.V. :200



**BENEFITS :**

1. It's a superfood. Wheatgrass has antioxidant, antibacterial, and anti-inflammatory properties.
2. It can eliminate toxins.
3. It can help with digestion.
4. It can boost your metabolism.
5. It can lower your cholesterol.
6. It can boost your system.
7. It can act as an energy enhancer.
8. It can help with diabets.
9. It can help with artritias.

**A SUPER FOOD HERBAL PRODUCT WITH NUTRIENTS AND ANTI-OXIDANTS.**

**An Ayurvedic Proprietary Medicine**

Each capsule contains :

Wheat Grass (Triticum sativum)	290mg
Aloe vera (Aloe barbadensis)	50mg
Sea buckthorn (Hippophae rhamnoides)	50 mg
Amla (Embolica officinalis)	50mg
Tulsi (Ocimum sanctum)	50mg
Elaichi (Elettaria cardamomum)	10mg
Preservatives	q.s.
Excipients	q.s.



**100% NATURAL HERBAL PRODUCT  
BOOST IMMUNE SYSTEM**

Presentation : 60 Capsules  
M.R.P. : ₹ 549/-  
D.P. : ₹ 399/- ; P.V. :175



**100% NATURAL HERBAL PRODUCT**  
**BOOST YOUR BRAIN NATURALLY BY GOODNESS OF PURE HERBS**

**BENEFITS :**

1. Brahmi works well for the brain by stimulating the brain cells working in the brain area and making it responsible for memory.
2. Ashwagandha is responsible for a substantial increase our muscle mass and strength.
3. Accelerates the stamina of a person to a great extent. Aswagandha works as a fast muscle recovery
4. Effective in insomnia, anxiety, mental irritability, disturbed sleep, agitation and minor depression, regulate nerve function.

**An Ayurvedic Proprietary Medicine**

Each capsule contains :

Ashwagandha (Withania somnifera)	100mg
Brahmi (Bacopa monnieri)	100mg
Shankpushpi (Convolvulus pluricaulis)	50mg
Guduchi (Tinospora cordifolia)	45mg
Liquorice (Glycyrrhiza glabra)	30mg
Triphala (Classical)	30mg
Ginseng (Panax ginseng)	30mg
Jatamansi (Nardostachys jatamansi)	20mg
Jyotishmati (Celastus paniculatus)	20mg
Kushmand (Benincasa hispida)	20mg
Beet root (Beta vulgaris)	15mg
Gotu kola (Centella asiatica)	15mg
Sharpunkha (Tephrosia purpurea)	10mg
Vach (Acorus calamus)	5mg
Rumi mastagi (Pistacia lentiscus)	5mg
Sudha Guggulu (Commiphora mukul)	3mg
Mukta pisti (Classical)	2mg
Preservatives	q.s.
Excipients	q.s.



Presentation : 60 Capsules  
M.R.P. : ₹ 499/-  
D.P. : ₹ 349/- ; P.V. : 150



**BENEFITS :**

1. Helps in blood's natural cleansing and boosts the flow of blood to the joints.
2. Remove harmful toxin from the body.
3. Enhances function of the liver.
4. Help increases immunity.
5. Effective against the chronic skin infection, prevent skin allergic and reoccurrence, reduce skin inflammation, heals skin wounds, natural skin tonic and purify the blood.

**An Ayurvedic Proprietary Medicine**

Each capsule contains :

Anantmoool (Hemidesmus indicus)	100mg
Manjistha (Rubia cordifolia)	80mg
Shirish Chal (Albizia Lebbeck)	65mg
Kachnar Chal (Bauhinia variegata)	50mg
Neem (Azadirachta indica)	50mg
Daru Haldi (Berberis aristata)	30mg
Mundi (Sphaeranthus indicus)	30mg
Giloy (Tinospora cordifolia)	30mg
Chirayta (Swertia chirayita)	10mg
Sahajan Chal (Moringa oleifera)	10mg
Lodhra (Symlocos racemosa)	10mg
Gulab (Rosa centifolia)	10mg
Mulethi (Glycyrrhiza glabra)	10mg
Nagarmotha (Cyperus rotundus)	10mg
Yasad Bhasma (Classical)	5mg
Preservatives	q.s.
Excipients	q.s.

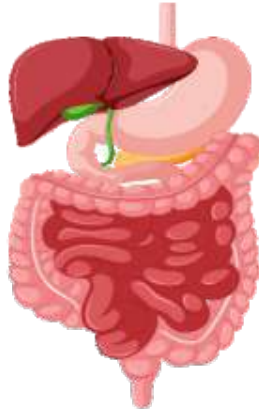


Presentation : 60 Capsules  
M.R.P. : ₹ 549/-  
D.P. : ₹ 349/- ; P.V. : 160

### Composition:

Each capsule contains dry extract derived from:

Punarnava (Boerhaavia diffusa) Rt.	80mg
Haldi (Curcuma longa) Rz.	80mg
Mulethi (Glycyrrhiza glabra) St./Rt.	50mg
Tulsi (Ocimum sanctum) W.Pl.	25mg
Giloy (Tinospora cordifolia) St.	25mg
Saunth (Zingiber officinale) Rz.	25mg
Sonamukhi (Cassia angustifolia) Lf.	25mg
Bhringraj (Eclipta alba) W.Pl.	20mg
Bhui Amla (Phyllanthus niruri) W.Pl.	20mg
Amla (Emblica officinalis) Fr.	20mg
Kasni (Cichorium intybus) Sd.	20mg
Arjuna (Terminalia arjuna) Bk.	20mg
Revand Chini (Rheum emodi) Rz.	20mg
Triphala (Classical)	20mg
Pippali (Piper longum) Fr.	10mg
Chirayta (Swertia chirata) W.Pl.	10mg
Trivit (Opocerculina turpethum) Rt.	10mg
Sudha Shilajit (Classical)*Esd.	5mg
Aragvadha (Cassia fistula)	4mg
<b>Powder:</b>	
Abhrak Bhasma (Classical)* Pdr.	5mg
Charcoal	5mg
Sanchal Namak (Unaqua sodium chloride) Pdr.	1mg
Hing (Ferula foetida) Res.	1mg
Excipients	q.s.



### Benefits:-

Helps in eliminating toxins and improve digestive system, antioxidant, helps in blood purification, relieves from constipation and indigestion, anaemia, loss of appetite, liver or digestive disorders.

Presentation : 60 Capsules	Presentation : 90 Capsules
M.R.P. : ₹ 499/-	M.R.P. : ₹ 699/-
D.P. : ₹ 349/- ; P.V. :160	D.P. : ₹ 499/- ; P.V. :240

# Piles Care

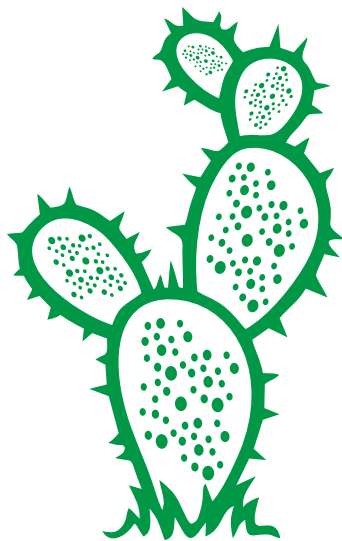
## CAPSULES

For treatment of Haemorrhoids (Piles), Anal Fissures, Anal Fistula Reduces bleeding & swelling, Relieves Itching & Pain

### Composition:

Each capsule contains dry blend extract & Powder derived from:

Soorna (Amorphophallus campanulatus) Corm	70mg
Sannai (Cassia angustifolia) Lf.	50mg
Haritaki (Terminalia chebula) Fr.	50mg
Erand (Ricinus communis) Rt.	50mg
Bilva (Aegle marmelos) Fr.	50mg
Neem (Azadirachta indica) Lf.	30mg
Nishota (Opocerculina turpethum) Rt.	20mg
Punarnava (Boerhaavia diffusa) Rt.	20mg
Aloevera (Aloe barbadensis) Lf.	20mg
Giloy Satav (Tinospora cordifolia) St.	20mg
Triphala (Classical)	15mg
Raktaniryas (Daemonoropus draco) Res.	10mg
Khas (Vetiveria zizanioides) Rt.	10mg
Nagkesar (Mesua ferrea) Stmn.	10mg
Daruharidra (Berberis aristata) St.	5mg
Methi (Trigonella foenum-graecum) Sd.	5mg
Isabgol (Plantago ovata) Husk	5mg
Aragvadha (Cassia fistula) Fr. Pulp	5mg
Kanchanara (Bauhinia variegata) St. Bk.	5mg
<b>Powder:</b>	
Bol Parpati (Classical)* Pdr.	20mg
Arshoghani Vati (Classical)* Pdr.	20mg
Parval Pisti (Classical)* Pdr.	10mg
Excipients	q.s.



### Benefits:-

Constipation, Helps to cure bleeding piles, Blood leukemia, Relieves painful & inflamed itching.

Presentation : 90 Capsules
M.R.P. : ₹ 699/-
D.P. : ₹ 399/- ; P.V. :175



# ACIDITY CARE

## CAPSULES

### NATURAL & EFFECTIVE FORMULATION FOR ACIDITY

#### An Ayurvedic Proprietary Medicine Composition:

Each capsule contains dry blend extract of following:  
 Amla (*Emblca officinalis*) Fr. 50mg, Giloy (*Tinospora cordifolia*) St. 50mg, Harad (*Terminalia chebula*) Fr. 50mg, Mulethi (*Glycyrrhiza glabra*) St./Rt. 35mg, Jeera (*Cuminum cyminum*) Fr. 35mg, Ajmoda (*Apium leptophyllum*) Fr. 30mg, Pippali (*Piper longum*) Fr. 30 mg, Nishot (*Operculina turpethum*) Rt. 20mg, Chitrak (*Plumbago zeylanica*) Rt. 15mg, Kutki (*Picrorhiza kurroa*) Rz. 10mg, Vidang (*Embelia ribes*) Fr. 10mg, Methi (*Trigonella foenum graecum*) Sd. 10mg, Lavang (*Syzygium aromaticum*) Fl. Bud 10mg, Dalchini (*Cinnamomum zeylanicum*) Bk. 10mg, Elachi (*Elettaria Cardamomum*) Fr. 10mg, Ajwain (*Trachyspermum ammi*) Fr. 10mg, Saunth (*Zingiber officinale*) Rz. 10mg, Makoy (*Solanum nigrum*) W.Pl. 10mg, Satavari (*Asparagus racemosus*) Rt. 10mg, Beal giri (*Aegle marmelos*) Fr. 10mg, Kapoor kachri (*Hedychium spicatum*) Rz. 5mg, Saunf (*Foeniculum vulgare*) Fr. 5mg, Kharjura (*Phoenix dactylifera*) Fr. 4mg, Draksha (*Vitis vinifera*) Fr. 3.5mg, Mochras (*Bombax malabaricum*) Exd. 20mg, Powder: Mukta shukti pisthi (Classical) Pdr. 20mg, Sajji kshar (Classical)\* Pdr. 10mg Navsadar (Classical) # Pdr. 10mg, Kapardak bhasma (Classical)\* Pdr. 5mg, Shank bhasma (Classical)\*Pdr. 5mg, Shwet parpati (Classical)\* Pdr. 5mg, Hing (*Ferula foetida*) Res. 0.3mg, Saindhav lavan (*Sodii chloridum*) Pdr. 0.2mg, Excipients q.s., Preservatives: Methylparaben (I.P.), Propylparaben (I.P.)  
 Ref. Bhayprakash Nighantu, \* Ayurveda Sara Sangraha, # Ras Ratan Samuchya.

#### Benefits of using it:

##### Digestion:

Acidity care capsules can help with digestion, bloating, and constipation.

##### Stomach pain:

Acidity care capsules can help with stomach pain, burning sensation, and abdominal pain.

##### Acid reflux:

Acidity care capsules can help with acid reflux and hyperacidity.

##### Gut health:

Acidity care products can help with gut health and manage gut disorders.



Presentation : 60 Capsules  
 M.R.P. : ₹ 599/-  
 D.P. : ₹ 399/- ; P.V. :175

# KIDNEY CARE

## CAPSULES

#### An Ayurvedic Proprietary Medicine

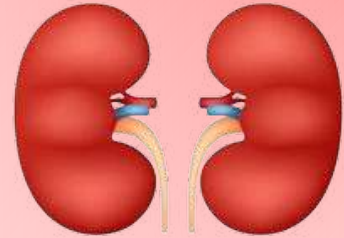
#### Composition:

Each capsule contains dry blend extract of following:

Gokhru ( <i>Tribulus terrestris</i> ) Fr.	100mg
Pashanbhed ( <i>Bergenia ligulata</i> ) Rz.	100mg
Punarnava ( <i>Boerhaavia diffusa</i> ) Rt.	100mg
Daruhaldi ( <i>Berberis aristata</i> ) Ht. Wd.	25mg
Bijora ( <i>Citrus medica</i> ) Fr.	25mg
Varun ( <i>Crataeva nurvala</i> ) Sd.	25mg
Palash ( <i>Butea monosperma</i> ) Sd.	25mg
Kasni ( <i>Cichorium Intybus</i> ) Sd.	25mg
Sheetal chnini ( <i>Piper cubeba</i> ) Fr.	25mg
Sudha Guggulu ( <i>Commiphora mukul</i> ) Exd.	25mg
Kulthi ( <i>Dolichos biflorus</i> ) Sd.	15mg
Vaividang ( <i>Embelia ribes</i> ) Fr.	10mg
Excipients	q.s.

#### Benefits of using it:

- ➔ Improves Kidney Function Naturally
- ➔ Helps and Prevents kidney infections
- ➔ Helps in Reducing Kidney Cysts
- ➔ Improves Urine Output



Presentation : 60 Capsules  
 M.R.P. : ₹ 599/-  
 D.P. : ₹ 399/- ; P.V. :175

# phytocane™

## CAPSULES

**Ayurvedic Proprietary Medicine  
with 100% Pure Herbs**

AN AYURVEDIC PROPRIETARY MEDICINE

**Each hard gelatin capsule contains:**

Drumstick ( <i>Moringa oleifera</i> ) Leaf powder	100 mg
Fenugreek ( <i>Trigonella foenum graecum</i> ) Seed Extract powder	50 mg
Shilajit Extract ( <i>Asphaltum punjabianum</i> )	40 mg
Spirulina ( <i>Arthrospira platensis</i> ) Whole Plant powder	40 mg
Amla ( <i>Phyllanthus emblica</i> ) Fruit Extract powder	30 mg
Oregano ( <i>Origanum vulgare</i> ) Leaf Extract powder	30 mg
Rosemary ( <i>Rosmarinus officinalis</i> ) Leaf Extract powder	30 mg
Pomegranate ( <i>Punica granatum</i> ) Fruit Peel Extract powder	30 mg
Mangosteen ( <i>Garcinia mangostana</i> )	30 mg
Sea buckthorn ( <i>Hippophae rhamnoides</i> ) leaves, Flowers, Seeds & Fruits	25 mg
Ashwagandha ( <i>Withania somnifera</i> ) Roots	20 mg
Korean Ginseng ( <i>Panax ginseng</i> ) Roots	20 mg
Safed Musli ( <i>Chlorophytum borivilianum</i> ) Roots	20 mg
Manjistha ( <i>Rubia cordifolia</i> ) Roots	20 mg
Gokhru ( <i>Tribulus terrestris</i> ) Leaves, Root & Seed	20 mg
Shatavari ( <i>Asparagus racemosus</i> ) Roots	16 mg
Turmeric ( <i>Curcuma longa</i> ) Rhizomes	10 mg
Black Ginger ( <i>Kaempferia parviflora</i> ) Rhizomes	10 mg
Kesar ( <i>Crocus sativus</i> ) Flowers	5 mg
Black Pepper ( <i>Piper nigrum</i> ) Dried berries	2 mg
Black Cumin ( <i>Nigella sativa</i> ) Seeds	2 mg
Excipients	q.s.

**Combat Free Radical Damages,  
Oxidative Stress & Inflammation**

## **BENEFITS:**

- Boosts immune system.
- Cleanses harmful toxin.
- Increases energy.
- Stamina, Vigour, & Vitality.
- Controls blood sugar level.
- Blood purification.
- Good for heart health.
- Weight loss.
- Destroy tumor cells.



Presentation : 90 Capsules  
M.R.P. : ₹ 1499/-  
D.P. : ₹ 999/- ; P.V. :550

# **SUKH SUNDARI**

## **WOMEN HEALTH**

### **CAPSULES**

#### **FOR WOMEN ONLY**

### **Benefits Of Using It:**

- ➔ **Helps to fight weakness & increase energy**
- ➔ **Improves general health**
- ➔ **Increase strength, Vigor & vitality**



#### **An Ayurvedic Proprietary Medicine**

##### **Composition:**

Each capsule contains dry blend extract of following:

Satavari (Asparagus racemosus) Rt.	50mg
Ashwagandha (Withania somnifera) Rt.	50mg
Sudha Shilajit (Classical)# Exd.	50mg
Latakasturi (Hibiscus abelmoschus) Sd.	40mg
Akarkara (Anacyclus pyrethrum)* Rt.	30mg
Safed Musli (Asparagus adscendens) Rt.	30mg
Sudha Kaunch Beej (Mucuna pruriens) Sd.	30mg
Gokharu (Tribulus terrestris) Fr.	30mg
Vidari Kand (Pueraria tuberosa) Tub.Rt.	30mg
Talamkhana (Asteracantha longifolia) Sd.	30mg
Javitri (Myristica fragrans) Pdr.	20mg
Jaiphal (Myristica fragrans) Sd.	10mg
Yastimadhu (Glycyrrhiza glabra) Rt./St.	10mg
Daruhaldi (Berberis aristata) St.	10mg
Ashoka chal (Saraca asoca) Bk.	10mg
Guduchi (Tinospora cordifolia) St.	10mg
Bala (Sida cordifolia) W.Pl.	10mg
Jatamansi (Nardostachys jatamansi) Rz.	10mg
Kesar (Crocus sativus) Sty. & Stg.	0.5mg
<b>Powder:</b>	
Trivang Bhasma (Classical)# Pdr.	20mg
Loha Bhasma (Classical)# Pdr.	15mg
Swarnvang Bhasma (Classical)# Pdr.	4.5mg
Excipients	q.s.



Presentation : 60 Capsules  
M.R.P. : ₹ 599/-  
D.P. : ₹ 399/- ; P.V. :175

# Trendsafe Tablets

L-Arginine, Collagen Peptide Type I, Sodium Hyaluronate, Chondroitin Sulfate Sodium and Vitamin C Tablets

## Ingredients:

Each uncoated bilayered tablet contains (approx):

		% RDA*
L -Arginine	500mg	**
as sustained release from		
Chondroitin Sulfate Sodium	200mg	**
Collagen Peptide Type 1	40mg	**
Vitamin C	30mg	88
Sodium Hyaluronate	30mg	**
Excipients		q.s

\*Sodium Based on ICMR guidelines \*\*RDA not established

## Benefits:

- (1) Trendsafe helps keep joints & muscles strong, flexible and elastic, supporting fast recovery from wear and tear damage or injuries.
- (2) It also acts at the cartilage site (tissue joints), thereby supporting repair & fluids for cushion & elasticity.
- (3) It maintains the joints integrity useful for bone health, joint pain and low back pain.
- (4) It is helpful for relief from arthritic pain and stiffness, used to treat joint pain, tendonitis and osteoarthritis.



**Presentation : 1X15 Tablets**  
**M.R.P. : ₹ 499/-**  
**D.P. : ₹ 349/- ; P.V. :175**

# Phytocure™ Osteoserve

*Rosehip Extract, Devils Claw Extract & Boswellia Seratta Extract Tablets*

## Benefits:

1. Rosehip contains polyphenols and anthocyanins, which help easy joint inflammation and prevent joint damage.
2. Devil's claw is a herb that is beneficial for arthritis and other types of joint pain.
3. Boswellia can help reduce joint swelling, pain, stiffness and other inflammatory condition. It increases blood supply to the joints.
4. Phytocure Osteoserve improves joint flexibility and provide relief from pain. It aids in alleviating joint inflammation, pain, swelling and stiffness.



## Composition:

Each film coated tablet contains (Approx) :

Rosehip Extract	275 mg.
Devils Claw Extract (20%)	100 mg.
Boswellia Seratta Extract (65%)	307.50mg.
Glucosamine Sulphate	50mg.
Maha Yograj Guggul	20mg.
Excipients	q.s.



**Presentation : 60 Tablets**  
**M.R.P. : ₹ 1399/-**  
**D.P. : ₹ 1000/- ; P.V. :550**

Methylcobalamin, Calcium Citrate Malate, Omega-3, Vit K27, Folic Acid With Multiminerals Soft Gelatin Capsules

# CALMAP K27<sup>TM</sup> Softgel Capsule



## Composition

### Nutritional Information :

Energy Value	2.685 kcal.
Fat	0.205 g.
Protein	0.150 g.
Carbohydrate	0.060 g.
Polyunsaturated Fatty Acids	0.180 g.
Monounsaturated Fatty Acids	0.015 g.
Saturated Fatty Acids	0.010 g.
Cholesterol	0.0 mg.
Trans Fatty Acids	0.0 g.

## Benefits:

CALMAP K27 Softgel Capsules use to treat vitamin B12 deficiency. Vitamin B12 is important for the brain and nerves, and for the production of red blood cells.

## Usage:

Take 1 or 2 capsules daily as a dietary supplement to your diet for optimal health

Presentation : 10x1x10 Softgel Capsules

M.R.P. : ₹ 2100/-

D.P. : ₹ 1650/- ; P.V. :800

# Vitamap<sup>TM</sup> Softgel Capsule

Complete Antioxidant with ginseng, Vitamins, Minerals & Lactobacillus Sporogenes Softgel Capsules

## Composition

### Nutritional Information :

Energy Value	5.64kcal
Fat	0.375gm
Protein	0.278gm
Carbohydrate	0.286gm
Polyunsaturated Fatty Acids	0.135gm
Monounsaturated Fatty Acids	0.372gm
Saturated Fatty Acids	0.246gm
Cholesterol	0 gm
Trans Fatty Acids	Traces

## Benefits:

For regular patients, who suffer from stress and depression, hyperglycemia, high cholesterol, and sexual dysfunction.

To increase energy, to sharpen cognitive function, to treat anti inflammatory effects, for flu prevention, for lowering blood sugar, and also for treatment of erectile dysfunction.

## Usage:

Take 1 or 2 capsules daily as a dietary supplement to your diet for optimal health.

Presentation : 10x1x10 Capsules

M.R.P. : ₹ 1000/-

D.P. : ₹ 800/- ; P.V. :380



# Vitamap™-OK Tablets

Multivitamins, Multiminerals, Amino Acid  
With Taurine & Ginseng Extract Tablets



**BENEFITS:**  
*Helps Maintain Energy*  
*Helps Build Immunity*  
*For Overall Health*

Each film coated tablet contains:	%RDA
Taurine	500mg. **
Soya Protein Hydrolysate	186.5mg
contains approximate Amino Acids:	
L-Leucine	13.45mg **
L-Arginine Hydrochloride	13.28mg **
L-Lysine Hydrochloride	11.07mg **
L-Phenylalanine	9.04mg **
L-Isoleucine	8.25mg **
L-Valine	7.91mg 30
L-Threonine	6.8mg **
L-Histidine Hydrochloride	4.35mg **
DL-Methionine	2.2mg 22
L-Tryptophan	2.03mg **
Ginseng Extract Powder (Highly Concentrated & Standardized, Ginseng Extract Corresponding to 425 mg of Root of Panax ginseng)	42.5mg **
Vitamin C	40mg 50
Vitamin B-3	12mg 86
Vitamin E	8mg 100
Magnesium	7.5mg 2
Zinc	10mg 59
Vitamin B-5	5mg 100
Manganese	1.5mg 37
Vitamin B2	1.4mg 70
Vitamin B-1	1.1mg 100
Vitamin A	1mg 100
Copper	600mcg 35
Folic acid	0.4mg 133
Iodine	0.1mg **
Chromium	33mcg 66
Biotin*	30mcg 75
Selenium	10mcg 25
Vitamin D3	5mcg 100
Excipients	q.s.
<b>Nutritional Information (Approximate Values) :</b>	
Per Serving	Per Tablet
Energy Value	4.28 kcal
Protein	0.532 g.
Carbohydrate	0.445 g.
Fat	0.037 g.

Presentation : 10x1x15's  
M.R.P. : ₹ 1500/-  
D.P. : ₹ 1200/- ; P.V. :510

## VITAMAP™ 9G

Softgel Capsules



### Ingredients:

Soft Gel Capsules of Ginseng Extract, Green Tea Extract, Grape Seed Extract, Ginkgo Biloba Extract, Garlic Powder, Guggul, Ginger Root Extract, Green Coffee Bean Extract, Glycyrrhiza Glabra Extract, Lycopene, Omega-3 Fatty Acid, Essential Amino Acids, Cyanocobalamin, Multivitamin, Multimineral, L-Carnitine L-Tartrate & Trace Elements

### Usage:

Take 1 or 2 capsules daily as a dietary supplement to your diet for optimal health.



Presentation : 10x1x10's  
M.R.P. : ₹ 3000/-  
D.P. : ₹ 2000/- ; P.V. :1100

# LAZYME<sup>®</sup>

## Tablets

### Nutritional Information (Approximate Value)

#### Each Serving (per Tablet) contains:

Energy Value	0.52 kcal.
Carbohydrate	0.01 gm.
Fat	0.000 gm.
Cholesterol	0.000 gm.

#### Each film coated tablet contains : %RDA\*

Fungal Diastase (1200)	100 mg.	**
Papain	60 mg.	**
Activated Charcoal	75 mg.	**
Excipients	q.s.	

### Benefits:

- (1) LAZYME Tablet helps to relieve digestive disorders like indigestion, heartburn, gas, and abdominal discomfort.
- (2) Papain is an enzyme that digests the protein.
- (3) Fungal Diastase is a starch-degrading enzyme. It helps to digest starch and carbohydrates.
- (4) Activated Charcoal is a gas adsorbent in high capacity, and it reduces the volume of intestinal gas, providing relief of symptoms and reducing or eliminating flatulence



Presentation : 10X15's  
M.R.P. : ₹ 1250/-  
D.P. : ₹ 900/- ; P.V. :450

# Curcumin CARE<sup>®</sup> Tablets

**Black Curtumi, Kalend Seed, Cordyceps, Black finger Extract, Curcumin 95%, Red Korean Ginseng Extract, Black Peper 85%. Ashwagandha, Ginger Extract and Kesar Tablets**

- ➔ Slows Skin Aging
- ➔ Enhances Respiratory Health
- ➔ Lowers Risk Of Joint Pains
- ➔ Repels Microbial Infections
- ➔ Improves Metabolism
- ➔ Fights Alzheimer's Disease
- ➔ Boosts Immunity
- ➔ Boosts Heart Health



Presentation : 3X10's  
M.R.P. : ₹ 900/-  
D.P. : ₹ 630/- ; P.V. :315

# Fleximap Tablets

Cissus quadrangularis, Vitex negundo, Boswellia serrata, Withania somnifera, Ricinus communis  
& Pluchea lanceolata Extract Tablets

*For Fractures and Bone Healing*

Composition : Each film coated tablet contains derived extract of :

Name of Ingredient	Botanical Name	Qty.	Part Used
Hadjod	Cissus quadrangularis	200 mg	Wh.p.
Nirgundi	Vitex negundo	200 mg	Rt.Sd
Shallaki	Boswellia serrata	200 mg	BK
Ashwagandha	Withania somnifera	100 mg	Rt.
Eranda	Ricinus communis	300 mg	Wh.p.
Rasna	Pluchea lanceolata	150 mg	Wh.p.
Excipients		q.s.	



## Benefits Of Using It:

- Helps in Joint Pain & Inflammation
- Improves Bone Density
- Arthritis Problem
- Helps in Osteoporosis
- Helps Strengthen Bones  
Joint Lubrication

Presentation : 3X10  
M.R.P. : ₹ 750/-  
D.P. : ₹ 570/- ; P.V. :285





**PAIN GOfast**<sup>TM</sup>  
OIL

Provide relief from Joint Pain

Muscle Stiffness & Sore Muscles

An Ayurvedic proprietary medicine

Composition :

Each 10ml oil contains:

Gandhpura Oil (Gaultheria fragrantissima)	15.00%
Pudina Satva (Mentha piperata)	10.00%
Karpur (Cinnamomum camphora)	10.00%
Ajwain Satva (Trachyspermum ammi)	10.00%
Ashwagandha (Withania somnifera)	5.00%
Gokhru (Tribulus terrestris)	5.00%
Urad (Phaseolus mungo)	5.00%
Erand Mool (Ricinus communis)	5.00%
Nilgiri Oil (Eucalyptus globulus)	5.00%
Punamava (Boerhaavia diffusa)	2.00%
Kateri (Solanum surattense)	2.00%
Gandparsami (Paederia foetida)	2.00%
Hadjoda (Cissus quadrangularis)	2.00%
Clove Oil (Syzygium aromaticum)	2.00%
Dalchini Oil (Cinnamomum zeylanicum)	2.00%
Jyotishmati Oil (Celastrus paniculatus)	2.00%
Tarpeen Oil (Pinus longifolia)	2.00%
Bael Chal (Aegle marmelos)	1.00%
Kachur (Curcuma zedoaria)	1.00%
Nirgundi Oil (Vitex negundo)	1.00%
Alsi Oil (Linum usitatissimum)	1.00%
Ratanjot (Alkanna tinctoria)	0.50%
Til Oil/Sesamum indicum	q.s.
Preservatives	q.s.



**Indication :**

**Provide relief from Joint Pain, Headache, Back Pain, Body Ache, Neck & Shoulder Pain, and Muscle Stiffness & Sore Muscles.**

Presentation : 100ml  
M.R.P. : ₹ 449/-  
D.P. : ₹ 349/- ; P.V. :150

**PhytaNext™**

# Vitamin D3

ORAL SPRAY



### Indication :

- It helps in strengthening bones.
- Immunity Booster
- Increases Muscular Health
- Great Taste
- No Difficulties Swallowing Tablets
- Better Absorption Rates
- Better Effectiveness Rates.
- Next Generation Supplement.

SUPPLEMENT FACTS		
Serving Size 4 spray (approx 0.5 ml)		
Servings per container (Approximate) %RDA*		
Vitamin D3	600 I.U.	100
Vitamin C	20 mg.	25
Vitamin K2-7	11.25 mcg	**
Nutritional fact (Approximate)		
Energy	.....1.12 Kcal	
Carbohydrate	.....0.00 gm	
Protein	.....0.00 gm	
Sugar	.....0.00 gm	
Contains Cosolvent, Sweetner, Viscosity Enhancers, Buffers		

Presentation : 50ml  
M.R.P. : ₹ 699/-  
D.P. : ₹ 549/- ; P.V. :295

**PhytaNext™**  
Mixed Fruit Flavour  
SUGAR free

# Multivitamin Oral Spray



### Indication :

- 19 essential nutrients.
- Complete nutritional support.
- Fast and effective absorption.
- Great for those with an active or busy lifestyle.
- Supports a normal immune system.
- Contributes to a reduction in tiredness and fatigue.

Nutritional fact (Approximate)		
Energy	..... 1.12 Kcal	
Carbohydrate	..... 0.00 gm	
Protein	..... 0.00 gm	
Sugar	..... 0.00 gm	
SUPPLEMENT FACTS		
Serving Size: 8 sprays (0.48 ml)		
	Per serving	%RDA
Vitamin C	12 mg	15%
Vitamin D3	500 IU	83%
Vitamin E	10 mg	100%
Vitamin B1	1.5 mg	36%
Niacinamide	10 mg	63%
Vitamin A (2000IU)	600mcg	100%
Vitamin B	0.5mg	**
Zinc	12mg	100%
Copper	300mcg	2.22%
Iron	1mg	5%
Magnesium	3mg	0.75%
Iodine	100mcg	66.6%
Chromium	25mcg	12.7%
Selenium	20mcg	50%
Vitamin B6	2 mg	118%
Folic Acid	400 mcg	170%
Vitamin B12	12 mcg	500%
Pantothenic Acid	10 mg	200%
Biotin	500 mcg	1667%
Excipients	q.s.	

Presentation : 50ml  
M.R.P. : ₹ 699/-  
D.P. : ₹ 549/- ; P.V. :295

**PhytoNext™**

# Melatonin

Oral Spray

Deep, Calm, Restful Sleep  
Butterscotch Flavour



## Indication :

- It helps you fall asleep faster and decrease the number of times you awaken during the night.
- Great Taste
- No Difficulties Swallowing Tablets
- Better Absorption Rates
- Better Effectiveness Rates.
- Next Generation Supplement.

Supplement Facts		
Serving Size 4 Spray (approx. 0.5 ml)		
Serving per Container : 60		%RDA Value
Melatonin	3 mg	**
L-Tryptophan	5 mg	**
L-Theanine	5 mg	**
Excipients	q.s.	
Nutritional Facts (Approximate)		
Energy		1.12 kcal
Carbohydrate		0.36 gm
Protein		0.00 gm
Sugar		0.00 gm
Fat		0.00 gm
Contains Cosolvent, Sweetener, Viscosity Enhancers, Buffers.		

Presentation : 50ml  
M.R.P. : ₹ 699/-  
D.P. : ₹ 549/- ; P.V. :295

**PhytoNext™**

Oral

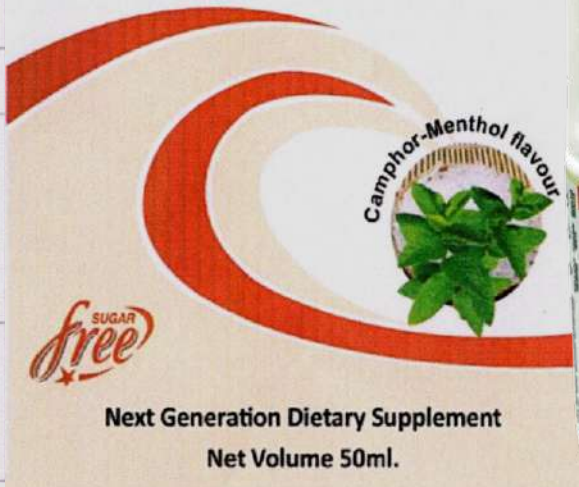
# Hygiene

Spray

## Fast-Action oral Hygiene Blend

Goodness of Curcumin, Clove, Ginger, Cinnamon, Elaichi & Fennel

Nutraceutical Oral Liquid Spray



Nutritional fact (Approximate)		
Energy .....	1.12 Kcal	
Carbohydrate.....	0.00 gm	
Protein .....	0.00 gm	
Sugar.....	0.00 gm	
Serving size : 1ml. (approx. 5 sprays)		
Serving per container :30 approx		
NUTRITIONAL INFORMATION	Amount per serving	%RDA
Turmeric extract (Rhizome)		
Standardized to 95% curcumin	25 mg.	**
Extract of clove	0.3 mg.	**
Extract of Ginger	0.2 mg.	**
Extract of Fennel	0.2 mg.	**
Extract of Cinnamon	0.2 mg.	**
Elaichi	0.2 mg.	**
Excipients	q.s.	
** RDA not established		

Next Generation Dietary Supplement

Net Volume 50ml.

Presentation : 50ml  
M.R.P. : ₹ 699/-  
D.P. : ₹ 549/- ; P.V. :295

# Throat & Cough Cure ORAL SPRAY

Sore Throat & Cough Relief Spray

**Composition:**

	Amount per dose
Curcumin 95%	1000mcg
Piperine 95%	100mcg
Ginger Extract	15mg
Panch Tulsi Liquid	1IU
Honey	100mg
Vegetable Glycerin	100mg
Licorice	100mg
Pippermint	10mg
Excipients	q.s.



**Benefits:**

It inhibits inflammation in throat it helps cure cold & cough it helps to diminish ulcers in the mouth.



Presentation : 50ml  
M.R.P. : ₹ 699/-  
D.P. : ₹ 549/- ; P.V. :295

# Testosterone Booster ORAL SPRAY

**Composition:**

	Amount per dose
Gokshura Extract	250mg
Mucuna pruriens	100mg
Safed Musli Extract	100mg
Ashwagandha Extract	100mg
Shilajit	100mg
Ophiocordyceps sinensis	40mg
Piperine	5mg
Kesar	5mg
excipients	q.s.



**Benefits:**

- Builds Muscles
- Improves Performance
- Increases Strength
- Booster energy



Presentation : 50ml  
M.R.P. : ₹ 699/-  
D.P. : ₹ 549/- ; P.V. :295

PhytoNext™



## Grape Flavour

### Composition: Amount per serving

Panax Ginseng codract Root	15mg
Grape seed extrac	12mg
Pomegranate extract Fruit	10mg
Moringa Oleifera extract Leaves	10mg
Alfalfa bract leaves	7.5mg

# Rejuvenation

## ORAL SPRAY

### Fast-Action Immunity Blend

#### Usage:

- Serving 5 Sprays daily or as directed by the dietcien.
- This product is not intendedto diagnose, treat, cure or prevent any disease.



Presentation : 50ml  
M.R.P. : ₹ 699/-  
D.P. : ₹ 549/- ; P.V. :295

PhytoNext™



## Mango Flavour

Composition:  
Each dose contains 4 sprays (Approx 0.5 ml.)

Zink Sulphate	7.5mg
Vitamin B9	25mcg
Astaxanthin	0.5mg
Nicotinamide	14mg
Vitamin B12	2.2mcg
Magnesium Glycinate	2mcg
Vitamin C	5mg
Vitamin B3	1.25mg
Vitamin B2	0.35mg
Vitamin B6	0.3mg
Vitamin B5	1.25mg
Vitamin B1	0.275mg
Vitamin A	45mcg
Iodine	17.5mcg
Vitamin K1	13.75mcg
selenium	10mcg
Vitamin B7	7.5mcg
Vitamin D3	2.5mcg
Excipients	q.s.

# Woman Multivitamin

## ORAL SPRAY

### Multivitamin Multimineral & Antioxidant Oral Spray

#### Usage:

- Take 4 Sprays at a time in normal condition.
- If you didn't get proper result for 4 sprays then take a 8 sprays.



Presentation : 50ml  
M.R.P. : ₹ 699/-  
D.P. : ₹ 549/- ; P.V. :295

# T20<sub>chai</sub>

**Assam Premium Chai With 20 Ayurvedic Herbs & Spices Tasty with Herbal Benefits**



### **Ingredients:**

Assam Black Leaf Tea, Cardamon, Black Pepper, Licorice, Ginger, Cinnamon, Bay Leaf, Clove, Fennel, Ajwain, Pipli, Star Anise, Jivatri, Cumin, Fenugreek, Tulsi, Nutmeg, Turmeric, Flaxseed, Brahmi and Ashwagandha

### **Benefits**

- Boosts your immune system.
- Boosts your energy level.
- Helps with weight loss.
- Protects cold & cough.
- Improves long term memory.
- Fight off inflammation.
- Helps protect your bones.
- Rich in antioxidants.
- Helps to digestion.
- Reduces stress.
- Even ward off cancer and heart disease.

Presentation : 200gm  
M.R.P. : ₹ 499/-  
D.P. : ₹ 399/- ; P.V. :73

# GREEN TEA Tulsi & Ginger



### **Benefits:**

A well balanced herbal tea crafted using high quality green tea and superior tulsi leaves sourced fresh from the farms. This tea is a twist of the well known medicinal herb making it a great choice for all seasons. Helps with weight loss. Improves long term memory. Fight off inflammation. Helps protect your bones. Rich in antioxidants. Even ward off cancer and heart disease.

### **Ingredients:**

**Green Tea,  
Tulsi,  
Ginger**

Presentation : 100gm  
M.R.P. : ₹ 299/-  
D.P. : ₹ 249/- ; P.V. :51

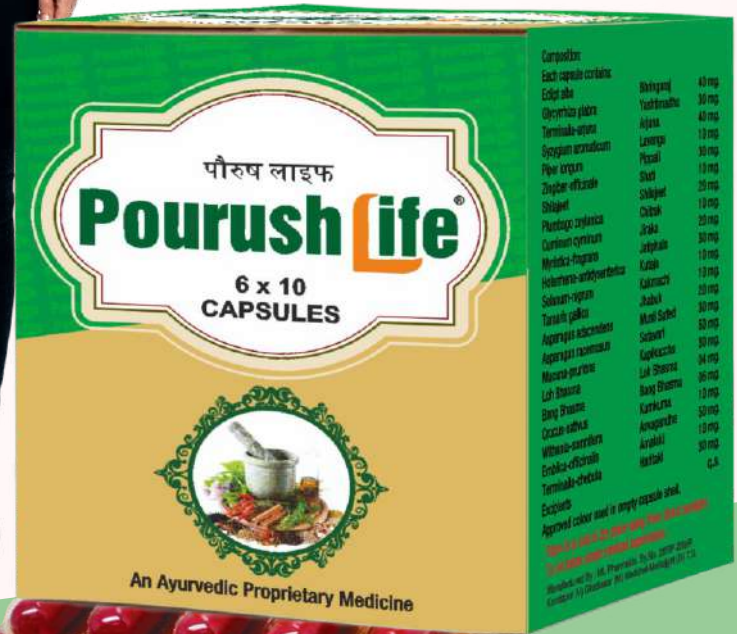
An Ayurvedic Proprietary Medicine



## Composition:

Each capsule contains:

Eclipt alba	Bhringaraj	40 mg.
Glycyrrhiza glabra	Yashtimadhu	30 mg.
Terminalia-arjuna	Arjuna	40 mg.
Syzygium aromaticum	Lavanga	10 mg.
Piper longum	Pippali	30 mg.
Zingiber-officinale	Shati	10 mg.
Shilajeet	Shilajeet	20 mg.
Plumbago zeylanica	Chitrak	10 mg.
Cuminum cyminum	Jiraka	20 mg.
Myristica-fragrans	Jatiphala	30 mg.
Holarrhena-antidysenterica	Kutaja	10 mg.
Solanum-nigrum	Kakmachi	10 mg.
Tamarix gallica	Jhabuk	20 mg.
Asparagus adscendens	Musli Safed	30 mg.
Asparagus racemosus	Satavari	50 mg.
Mucuna-pruriens	Kapikacchu	30 mg.
Loh Bhasma	Loh Bhasma	04 mg.
Bang Bhasma	Bang Bhasma	06 mg.
Crocus-sativus	Kumkuma	10 mg.
Withania-somnifera	Asvagandha	50 mg.
Emblica-officinalis	Amalaki	10 mg.
Terminalia-chebula	Haritaki	30 mg.
Excipients		q.s.



## Indication :

- 1) Relieves Constipation.
- 2) Easing Bowel Movement.
- 3) For Better Digestion, Sleep And To Improve Overall Health.
- 4) Beneficial In Protecting The Normal Functioning Of The Liver, And To Help Regularise Overall Body Functions.
- 5) Useful in anoraxia, slow growth, stamina enhancer and muscular weakness.

**Presentation : 6 x10 Capsules**

**M.R.P. : ₹ 222/-**

**D.P. : ₹ 176/- ; P.V. :60**



Woman Care Product

# Sanitary Pad Premium

Sanitary Pad  
locks upto  
**100%**  
wetness  
last all day

6 Pads



With Anion Chip  
In Large & Extra Large Pack



Directions for disposal



Presentation : 6 Pads

Size

: 280mm

M.R.P. : ₹ 45/- D.P. : ₹ 40/- ; P.V. : 7

Size

: 350mm

M.R.P. : ₹ 50/- D.P. : ₹ 45/- ; P.V. : 8

## Sukhsuvida®

### Sanitary Napkin

7 Pads  
With Superior Features



Dry Net  
Regular



## Sukhsuvida®

### Sanitary Pad

7 Pads

Dry Net Pad With Wings



Large



DIRECTIONS FOR USE



Remove the release paper from the back of the pack



Remove the release paper from the wings



Fold the wings around the sides of your panty crotch, and press them firmly.

Presentation : 7 Pads

Size : 240mm

M.R.P. : 30/- (Per Packet)

D.P. : ₹ 27/- ; P.V. : 7

Presentation : 7 Pads

Size : 280mm

M.R.P. : 35/- (Per Packet)

D.P. : ₹ 31/- ; P.V. : 7



## Composition:

Each capsule contains

Ashwagandha (Withania Somnifera)	100 mg
Satavari (Asparagus rasemosa)	80 mg
Safed Musli (Asparagus adscendens)	50 mg
Ginseng (Panax ginseng)	50 mg
Akarkara (Anacyclus pyrethrum)	50 mg
Sudha Shilajit (Classical)	50mg
Sudha Kaunch Beej (Mucuna pruriens)	25 mg
Gokharu (Tribulus terrestris)	24 mg
Salampunja (Orchis latifolia)	20 mg
Jaiphal (Myristica fragrans)	10 mg
Javitri (Myristica fragrans)	10 mg
Talamkhana (Asteracantha longifolia)	10 mg
Makardhwaj (Classical)	5 mg
Abhrak bhasma (Classical)	5 mg
Trivang Bhasma (Classical)	5 mg
Swarna (Gold) Bhasma (Classical)	5 mg
Kesar (Crocus sativus)	1 mg
Preservatives	q.s.
Excipients	q.s.

## Benefits:

Helps to fight weakness and increase energy, improves energy, improves general health and helps increase strength, vigour and vitality.

# Charam Sukh GOLD

100% NATURAL HERBAL PRODUCT



Presentation : 60 Capsules

M.R.P. : ₹ 899/-

D.P. : ₹ 640/- ; P.V. :320

## Composition:

Each capsule contains:	100 mg
Ashwagandha (Withania Somnifera)	100 mg
Kaunch Beej (Mucuna pruriens)	100 mg
Gokharu (Tribulus terrestris)	50 mg
Talamkhana (Asteracantha longifolia)	50 mg
Safed Musli (Asparagus adscendens)	20 mg
Akarkara (Anacyclus pyrethrum)	10 mg
Vidarikand (Ipomoea digitata)	10 mg
Satavari (Asparagus rasemosa)	20 mg
Salampunja (Orchis latifolia)	10 mg
Sudha Shilajit (Classical)	100 mg
Makardhwaj (Abelmoschus moschatus)	5 mg
Swaran Bhasma (Classical)	10 mg
Swaran Makshik Bhasma (Classical)	10 mg
Amber (Classical)	5 mg
Preservatives	q.s.
Excipients	q.s.

## Benefits:

Useful in anorexia, slow growth stamina enhancer and vitality.

# Charam Sukh<sup>TM</sup> CAPSULE

BOOSTS STAMINA ENERGY & VITALITY



Presentation : 5x3 x10 Capsules

M.R.P. : ₹ 1800/-

D.P. : ₹ 1400/- ; P.V. :700

  
**Charam<sup>TM</sup>  
Sukh**  
**Xtra Time oil**



Natural Actives

*Natural & safe feel more when making love*

**Benefits of Charam Sukh Oil:**

- (1) When used externally, it helps to maintain and promote tone, strength and stamina of local tissues.
- (2) Natural actives
- (3) Natural & safe feel more when making love

Ingredients:

Shudha shilajeet  
Nutmeg oil (Myristica fragrans)  
Clove oil (Syzygium aromaticum)  
Shrigopal tail (Reference Ratnawali/  
Vajikarnadhikara Bhaishajya)  
Shatavari (Asparagus racemosus)  
Amlaki (Emblica officinalis)  
Ashwagandha (Withania somnifera)  
Bala (Sida cordifolia)  
Shveta Chandana (Santalum album)  
Jivanti (Leptadenia reticulata)  
Yasthi (Glycyrrhiza glabra)  
Kumkuma (Crocus sativus, Stl/Stg.)  
Kamala (Nelumbo nucifera)  
Utpala (Nymphaea stellata)  
Sukshmaila (Elettaria cardamomum)



Presentation : 30ml  
M.R.P. : ₹ 399/-  
D.P. : ₹ 299/- ; P.V. :150

Safe Throughout Day With Yours  
Suvidacare FACE MASK

**99% Germ Protection**

**With Melt Blown**



**Presentation : 50 Nos**  
**M.R.P. : ₹ 750/-**  
**D.P. : ₹ 600/- ; P.V. :300**

# PHENYLE

**With Neem  
Flavour**



- Protects from Harmful Germs.
- Protects From Flies, Mosquitoes and Cockroaches.
- 5x Cleaning Power.

**Presentation : 500ml.**  
**M.R.P. : ₹ 75/-**  
**D.P. : ₹ 67/- ; P.V. :12**

# HAND WASH Liquid

## Benefits

- Hand wash kills germs from your hands.
- Prevents transmission of germs from one person to another.
- Suvidacare hand wash keep your hand soft.

- ❌ Kills 99.99% of Germs
- ❌ Fully Trusted Protection
- ✅ 10x Better Protection

Presentation : 250ml.  
M.R.P. : ₹ 75/-  
D.P. : ₹ 60/- ; P.V. :3



# liquid Dish Wash

With Lemon Power

## Benefits:

- It'll save water and energy.
- Good use of limited space.
- Cleaner crockery.
- Gets rid of germs.
- It's easier.
- It's kinder to your hands.

Presentation : 250ml.  
M.R.P. : ₹ 55/-  
D.P. : ₹ 49/- ; P.V. :4



# FLOOR CLEANER



**Kills 99.99%  
of Germs**

- Eco Friendly.
- Stain Blasting Formula.
- Lemon Fragrance.
- 5x Cleaning Power.



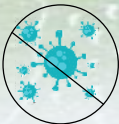
Presentation : 500ml.  
M.R.P. : ₹ 95/-  
D.P. : ₹ 85/- ; P.V. :16

Suvidacare  
CHANGING LIVES NATURALLY

## GLASS & MULTISURFACE CLEANER



Extra Cleaning Power.



Kills germs.



Spray convenient nozzle form.



Easy to use on all type of surface.

# Just Spray & Wipe!!



Presentation : 500ml.  
M.R.P. : ₹ 95/-  
D.P. : ₹ 85/- ; P.V. :8



# neem products

## WHY USE

### Neem Comb

### Regularly

- Neem wood restricts static caused by plastic combs & brushes. prevent frizz & breakage.
- Enhanced blood flow stimulates scalp brings hairfall relief & activates hair growth.
- Oil treatment & special neem delivery nutrition & anti-fungal actives. preventing hairfall & dandruff.
- Continued neem wood combing renders beautiful shine to hair.



Regular comb

M.R.P. : ₹ 199/-  
D.P. : ₹ 165/- ; P.V. : 75



## Wide Tooth Comb

100% Neem Wood

### Benefits —

Antibacterial and keeps dandruff away.  
Boosts growth and promotes healthy hair.  
Gentle on the hair, non static, and eco friendly. Provide scalp nourishment.



M.R.P. : ₹199/-

D.P. : ₹ 165/- ; P.V. :75



### Benefits —

- Anti Dandruff.
- Scalp Nourising.
- Promotes Healthy Hair.
- Boosts Growth.
- Improve Blood Circulation.
- Adds Shine To Your Hair.
- Rake Comb Have Great Durability.



## Rake comb

100% Neem Wood

M.R.P. : ₹199/-

D.P. : ₹ 165/- ; P.V. :75

## Charcoal Tooth Brush



### Charcoal Bristle Bamboo Wood

#### Benefits

- ➔ Charcoal infused bristles help in removing from the teeth surface.
- ➔ Tipped bristles help in deep gum line cleaning.
- ➔ Anti-Microbial neem handle prevents growth of pathogens on the brush handle.
- ➔ Small toothbrush head provides better access to hard to reach areas of the mouth, including back teeth.
- ➔ Unique marks stamped on handles for easy identification.
- ➔ Anti-Bacterial interdental brush free with the brush free with brush for cleaning between the teeth.

M.R.P. : ₹99/-

D.P. : ₹ 73/- ; P.V. :33

#### Benefits

- 100% Natural: HAND-MADE Bamboo Tongue Scraper; Chemical free.
- Smooth & Wider curve: maximum tongue coverage; No nicks and cuts while dragging at the tongue.
- Suitable for both adults and children.
- Non-sharp edges ensure a safe cleaning.
- It has a smother and border curve that ensures safe cleaning and maximum tongue coverage.
- The eco-friendly bamboo tongue cleaner improves your oral hygiene and gives you long lasting freshness.
- It is compostable and has no harmful impact on the environment.



### Bamboo Tongue Cleaner

M.R.P. : ₹99/-

D.P. : ₹ 73/- ; P.V. :35



### Loofah for body wash

#### HOW TO USE

1. Obtain a loofah.
2. Wet the loofah in the shower or bath.
3. Apply soap to the loofah.
4. Scrub your body with the loofah.
5. Rinse your body with cool water.

M.R.P. : ₹99/-

D.P. : ₹ 73/- ; P.V. :33



# ALKALINE WATER BOTTLE

## BENEFITS :-

1. WEIGHT LOSS.
2. BODY DETOX.
3. HYDRATION.
4. HEALTHY SKIN.
5. GOOD DIGESTION.
6. MUSCLES & JOINTS.
7. ENERGY.



Presentation : 1 Bottle (volume-650ml)  
 M.R.P. : ₹ 1549/-  
 D.P. : ₹ 1299/- ; P.V. : 501

Anti - oxident

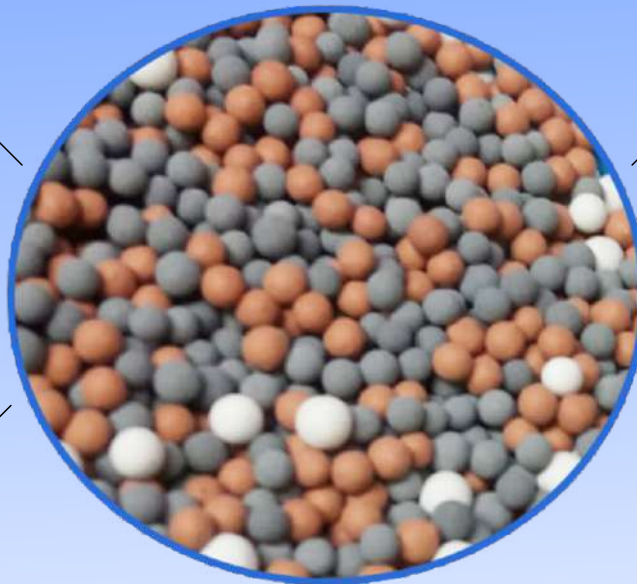
Anti - bacterial

Alkaline

Activation

Mineralization

Purification



## ALKALINE BALL

Presentation : 1 pack  
 M.R.P. : ₹ 499/-  
 D.P. : ₹ 399/- ; P.V. : 151

# Hydrogen bottle



## Benefits

- \* Easy to carry Water bottle with self-emitting hydrogen.
- \* It automatically saturates Water with Hydrogen, thus, enhancing quality of water
- \* Antioxidant Properties of water help in counteracting free radicals that can cause pre-mature aging.
- \* It is fitted with Platinum coated Titanium plates.
- \* Water Ionizers with solid and mesh plate delivers an electrical current to the water through an array of positively and negatively charged Platinum coated Titanium plates
- \* Bottle has charging points and has charging life of 50-60 cycle

**Presentation : 1Bottle (volume-500ml)**

**M.R.P. : ₹ 24999/-**

**D.P. : ₹ 19999/- ; P.V. : 8000**

## Alkaline Bottle SS (Sparkling Black)

### Benefits

- Weight Loss.
- Hydration.
- Liver Health.
- Digestive Health.
- Detoxification.
- Brain Health.
- Bone Health.
- pH Balance.
- Cholesterol Reduction.
- Energy Levels.



**Presentation : 1Bottle (volume-850ml)**

**M.R.P. : ₹ 2499/-**

**D.P. : ₹ 2099/- ; P.V. : 750**

# Alkaline Bottle Boost Up Filter



## Benefits

- BETTER HYDRATION.
- IMPROVE DIGESTION.
- INCREASES PH LEVEL.
- ANTI OXIDANT.
- BPA FREE.
- EASY TO USE.
- BETTER SKIN.
- ENRICH MINERALS.

**Presentation : 1Bottle**  
**M.R.P. : ₹ 1999/-**  
**D.P. : ₹ 1599/- ; P.V. : 550**

# Alkaline Bottle Glass Filter



## Benefits

- BALANCE ACID BY INCREASING pH.
- CREATES HIGH ANTI OXIDANT WATER.
- INCREASES HYDROGEN.
- EASY ABSORBATION BETTER HYDRATION.

**Presentation : 1Bottle**  
**M.R.P. : ₹ 2199/-**  
**D.P. : ₹ 1799/- ; P.V. : 630**

# ALKALINE

Copper Bottle



## *Benefits of water*

Produced from Alkaline Copper Bottle:-

- It has Antioxidants
- Protects from Cancer
- Balances High Blood Pressure
- Prevents Anemia
- Improve Digestion
- Cures Arthritis
- Helps in Weight loss

**Presentation : 1 Bottle**  
**M.R.P. : ₹ 2999/-**  
**D.P. : ₹ 2399/- ; P.V. : 1000**

# Protein Shaker Bottle



## Features:

- premium design: comes with 3-layer twist and locking storage facility. Great for carrying extra supplements for use throughout the day. Also, interlocking jars can be used with or without your shaker bottle.
- easy to use: gym protein shaker bottle has mixer net, just add your ingredients, and shake. The mixer net will keep ice & fruit from blocking the bottle nozzle while drinking. The shaker bottle has anti-slip design with measurement on the cup body.
- material: bpa-free protein shaker cup, 100% food grade material, eco friendly, safe for drinking, dishwasher safe. Perfect for gym sports, markings easy measuring both ounces and milliliters.
- suitable for: drink shaker bottle is perfect for sports, fitness, hiking, muscles body building, yoga and camping as well as school, work. You can replenish your body's nutrient energy at any time.



**Presentation : 1 Bottle**  
**M.R.P. : ₹ 699/-**  
**D.P. : ₹ 499/- ; P.V. : 124**

# Ion Spray (Silver Ion)



## **Tourmaline Ball**

It makes the water ingredient change in to weak alkaline water so that changes in to water that moisturizing effect is superior that is good to skin.

## **Silver Foam**

As the silver foam that maximized the silver surface area 6,000 times is mounted, abundant silver nano is released.

**Presentation : 1PC**

**M.R.P. : ₹ 11999/-**

**D.P. : ₹ 8999/- ; P.V. : 2000**

# Water jar filter

## Benefits

This product is very useful for your home office for your 20 liter water jar .Its makes your water very healthy pHessentia alkaline hydro oxy jar dip makes your regular water anti oxidant, alkaline, anti bacterial and adds required minerals. Its makes the drinking water very healtjy.



**Presentation : 1PC**

**M.R.P. : ₹ 1999/-**

**D.P. : ₹ 999/- ; P.V. : 430**

# Washing Ball

## Benefits

BioPlus Washing Ball for Washing Clothes in a Washing Machine is an amazing eco-friendly product. It enables the use of half the amount of the normally - used detergent, making sure clothes are washed even better. The powerful far-infrared rays penetrated by the ball enable it to break down water molecule size into smaller clusters, which increases the penetration force & power of water to reach all parts of clothes, resulting in better-washed clothes. The Ball doesn't use any harmful chemicals to function, making sure no harm to the environment is made. The BioPlus Washing ball is a perfect solution to saving the environment & enabling better-washed clothes for a happy life for oneself & others.



**Presentation : 1PC**  
**M.R.P. : ₹ 1199/-**  
**D.P. : ₹ 899/- ; P.V. : 320**

# Titanik Disk Filter

## Benefits

- Hydrogen Water: Increase pH level of storage water.
- Alkaline Water: Convert storage water into hydrogen rich water.
- Anti Oxidant: Retain anti oxidant in water.
- Add Minerals: Maintain TDS level of water by merging minerals to water.
- Micro Cluster: Supplied alkaline, Anti oxidant and hydrogen rich water.



**Presentation : 1PC**  
**M.R.P. : ₹ 1199/-**  
**D.P. : ₹ 899/- ; P.V. : 350**

# pH Scale Drops

*To ph test of any liquids*

## Direction for use:

Use 0.2 ml solution for 10 ml of the liquid under investigation and compare with the colorscale.



Presentation : 1PC(5ml)  
M.R.P. : ₹ 50/-  
D.P. : ₹ 40/- ; P.V. : 5

# Cooking Stone

## HOW TO USE?

The cooking stone absorbs and retains heat easily, making it great for achieving juicy baked meats and flavorful roasted veggies. After preheating inside the oven, you can use your baking stone to make homemade pizza with crispy crusts.



Presentation : 1PC  
M.R.P. : ₹ 1999/-  
D.P. : ₹ 1599/- ; P.V. : 550

# Alkaline Water Stick

## HOW TO USE?

you insert the stick into your water bottle, shake vigorously, then allow the stick to stay submerged for several minutes before removing it from the bottle. The alkaline minerals inside the stick raise the pH of your water to a more alkaline pH



Presentation : 1PC  
M.R.P. : ₹ 849/-  
D.P. : ₹ 699/- ; P.V. : 234





## For Improved Fertility & Productivity

### Nutritional Value per 1 Kg.

#### Fat Soluble Vitamins

Vitamin A	7,00,000 I.U.
Vitamin D3	70,000 I.U.
Vitamin E	250 mg.
Protein (33%)	10 gm.

#### Macro Minerals

Calcium	255 gm.
Phosphorus	127.5 gm.
Magnesium	6 gm.
Sodium	6 mg.
Sulphur	7.2 gm.

#### Water Soluble Vitamins

Nicotinamide	1000 mg.
--------------	----------

#### Trace Minerals

Copper	4.2 gm.
Cobalt	150 mg.
Iodine	325 mg.
Iron	1.5 gm.
Manganese	1.5 gm.
Selenium	10 mg.
Zinc	9.6 gm.
Potassium	100 mg.
Amino Acid	250 mg.
Live Yeast Extract	100 mg.

#### Wonder Herbs of Ayurveda

Ashwangandha (Withania Somnifera)	5 gm.
Jiwanti (Leptadenia Reticulata)	10 gm.
Satawari (Asparagus Racemosus)	10 gm.

### Benefits:

- Healthy Calf
- Maintains Health
- Improved Fertility
- Improves Milk Production
- Maximum Bio-Availability of Minerals



**Presentation : 1kg**

**M.R.P. : ₹ 1099/-**

**D.P. : ₹ 599/- ; P.V. :225**

## High End Real Like Attractive Imitation Jewellery



Earrings SC 410  
MRP: 2000/-  
DP:1500/- ; PV: 659



Earrings SC 350  
MRP: 1800/-  
DP:1250/- ; PV: 557



Earrings SC 290  
MRP: 1500/-  
DP:1050/- ; PV: 447



Earrings SC 110  
MRP: 550/-  
DP:385/- ; PV: 160



Earrings SC 100  
MRP: 500/-  
DP:350/- ; PV: 132



Studs SC 75  
MRP: 350/-  
DP:250/- ; PV: 77



Studs SC 101  
MRP: 500/-  
DP:350/- ; PV: 132



Bracelet SC 250  
MRP: 1500/-  
DP:1050/- ; PV: 495



Bracelet SC 251  
MRP: 1500/-  
DP:1050/- ; PV: 495





Suvdacare®  
CHANGING LIVES NATURALLY

# High End Real Like Attractive Imitation Jewellery



Earrings SC 180  
MRP: 1200/- (1 pair)  
DP: 900/- ; PV: 425



Suvitdacare®  
CHANGING LIVES NATURALLY

## High End Real Like Attractive Imitation Jewellery



Earrings SC 580

MRP: 2500/- (1 pair)

DP: 1650/- ; PV: 536



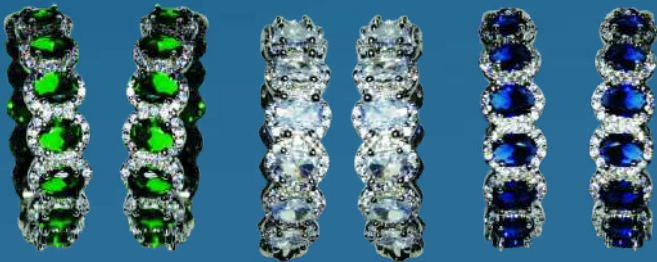
# High End Real Like Attractive Imitation Jewellery



Earrings SC 840  
MRP: 3000/- (1 pair)  
DP: 2100/- ; PV: 554



Earrings SC 140  
MRP: 1000/- (1 pair)  
DP: 750/- ; PV: 354



Earrings SC 340  
MRP: 1800/- (1 pair)  
DP: 1250/- ; PV: 509



# High End Real Like Attractive Imitation Jewellery



Necklace Set SC 451 (Silver)  
MRP: 2000/-  
DP:1500/- ; PV: 562



Necklace Set SC 450 (Golden)  
MRP: 2000/-  
DP:1500/- ; PV: 562



Necklace Set SC 740  
MRP: 3000/-  
DP:2200/- ; PV: 731





**CAP**

M.R.P. : ₹175/-  
D.P. : ₹ 140/- ; P.V. :33



**Executive Bag**

M.R.P. : ₹1500/-  
D.P. : ₹ 1200/- ; P.V. :154



**SMALL SLING BAG**

M.R.P. : ₹275/-  
D.P. : ₹ 220/- ; P.V. :4



**Back Pack Trolley Bag**

M.R.P. : ₹2499/-  
D.P. : ₹ 2000/- ; P.V. :240



**SMALL LUGGAGE BAG**

M.R.P. : ₹350/-  
D.P. : ₹ 280/- ; P.V. :24



**BIG SLING BAG**

M.R.P. : ₹300/-  
D.P. : ₹ 240/- ; P.V. :5



**luggage Trolley Bag**

M.R.P. : ₹2499/-  
D.P. : ₹ 2000/- ; P.V. :240



**NON WOVEN BAG**

M.R.P. : ₹ 10/-  
D.P. : ₹ 7/- ; P.V. :1



**JUTE BAG large**

M.R.P. : ₹ 100/-  
D.P. : ₹ 80/- ; P.V. :10



**JUTE BAG**

M.R.P. : ₹200/-  
D.P. : ₹ 160/- ; P.V. :26



**NON WOVEN BAG**

M.R.P. : ₹75/-  
D.P. : ₹ 60/- ; P.V. :11



**NON WOVEN BAG**

M.R.P. : ₹ 35/-  
D.P. : ₹ 25/- ; P.V. :4



**COTTON BAG**

M.R.P. : ₹60/-  
D.P. : ₹ 48/- ; P.V. :7



**NON WOVEN BAG**

M.R.P. : ₹ 40/-  
D.P. : ₹ 30/- ; P.V. :3



**NON WOVEN BAG**

M.R.P. : ₹ 30/-  
D.P. : ₹ 20/- ; P.V. :2



**BLANKET 4400 D/B SOFT**

**M.R.P.: ₹ 3499/-  
D.P.: ₹ 2799/- ; P.V.: 510**



**BLANKET 2400 SOFT**

**M.R.P.: ₹ 2299/-  
D.P.: ₹ 1899/- ; P.V.: 505**



**BLANKET 3400 IVON D/B SOFT**

**M.R.P.: ₹ 2899/-  
D.P.: ₹ 2299 ; P.V.: 515**



**BLANKET BABY 32X45 CAP**

**M.R.P. : ₹449/-  
D.P. : ₹ 359/- ; P.V. :165**



**BLANKET BULAND CHECK**

**M.R.P. : ₹499/-  
D.P. : ₹ 399/- ; P.V. :187**



**BLANKET 900 D/B CHECK**

**M.R.P. : ₹749/-  
D.P. : ₹ 599/- ; P.V. :281**



**T-SHIRT**

**M.R.P. : ₹300/-  
D.P. : ₹ 240/- ; P.V. :18**



**SHIRT (White)**

**M.R.P. : ₹799/-  
D.P. : ₹ 649/- ; P.V. :187**



**T-SHIRT (Blue)**

**M.R.P. : ₹599/-  
D.P. : ₹ 499/- ; P.V. :103**



**Badge**

**M.R.P. : ₹99/-  
D.P. : ₹ 80/- ; P.V. :13**



**Gents Wallet Set**

**M.R.P. : ₹1499/-  
D.P. : ₹ 999/- ; P.V. :108**



**Ladies Wallet Set**

**M.R.P. : ₹1499/-  
D.P. : ₹ 999/- ; P.V. :108**



**Suvidacare Umbrella**

**M.R.P. : ₹ 499/-  
D.P. : ₹ 349/- ; P.V. :40**



**EXAL SIGMA PEN**

**M.R.P. : ₹25/-  
D.P. : ₹ 20/- ; P.V. :3**



**ASSAN**

**M.R.P. : ₹165/-  
D.P. : ₹ 132/- ; P.V. :60**





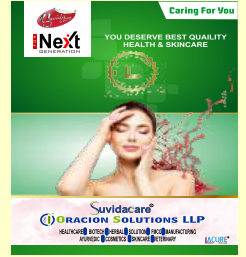
**Konica Jug**

M.R.P. : ₹150/-  
D.P. : ₹ 120/- ; P.V. :40



**Micra jug**

M.R.P. : ₹140/-  
D.P. : ₹ 112/- ; P.V. :40



**CATALOGUE**  
M.R.P. : ₹100/-  
D.P. : ₹ 80/- ; P.V. :4

**ACURE<sup>®</sup>** SKIN CARE *at your Door Step*

*Thank  
You*



**Corp. Address**

66/1A, Baithakkhana Road, 1st Floor, Kolkata-700 009, WB.,  
TEL:033-4065 1002; Ph.No:9062444333;  
E-mail:suvidacareindia@gmail.com;  
Website:www.suvidacare.com

**Unit Address**

Taki Road, Kadambagachi, Barasat, 24-Pgs(N), Kolkata -700125, WB.,  
TEL:033-4065 1002; E-mail:suvidacareindia@gmail.com;

**ACURE<sup>®</sup>** SKIN CARE A Division of Maheshrajka Pharmaceuticals Pvt. Ltd.



An ISO 9001:2015 and GMP Certified Company

